

**THE PACKERS'
HANDY REFERENCE BOOK**



ISSUE OF 1916-1917

**THE KEARNS-GORSUCH BOTTLE CO.
ZANESVILLE, OHIO**

ILLUSTRATED CATALOG

PACKERS' WARE

Machine Made
and
Hand Blown

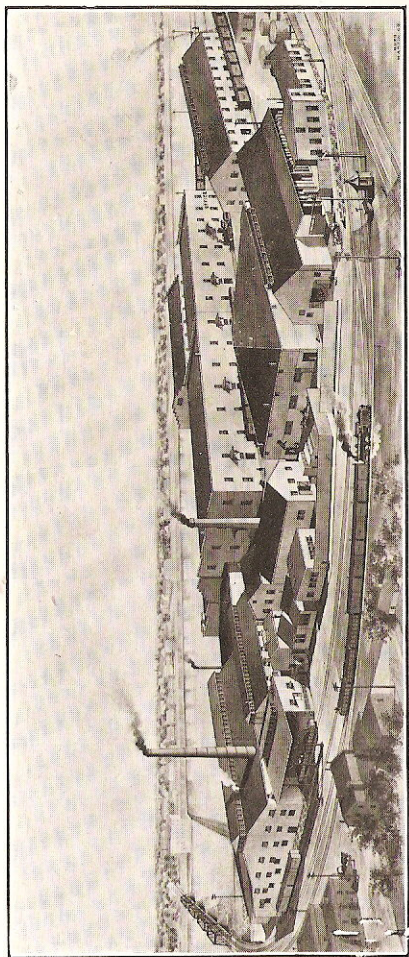
ISSUE OF
1916-1917

The Kearns-Gorsuch Bottle Co.

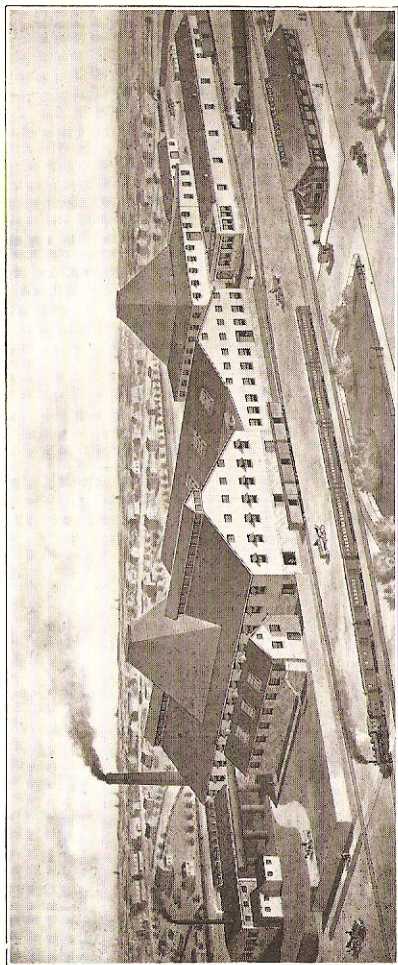
General Offices

Zanesville, Ohio

Factories : Zanesville and Barnesville, Ohio



FACTORY AT ZANESVILLE, OHIO



FACTORY AT BARNESVILLE, OHIO

REPRESENTATIVES

Charles C. Goss.....	172 Fulton Street.	New York, N. Y.
H. W. Snoots.....	186 N. La Salle Street.	Chicago, Ill.
National Glass Bottle Co.....	118 N. Third Street.	Philadelphia, Pa.
Linhardt & Frazier.....	Pierce Building.	St. Louis, Mo.
E. W. Pearce.....	417 Board of Trade Building.	Boston, Mass.
W. T. Owen & Co.....	121 W. Baltimore Street.	Baltimore, Md.
Geo. H. Elliott.....	4 Campau Building.	Detroit, Mich.
Schloss Manufacturing Co.....	42 Beale Street.	San Francisco, Cal.
Linton & Scott.....	New York Life Building.	Kansas City, Mo.
Aeme Container Co.....	121-123 E. Water Street.	Cincinnati, Ohio
Linton & Scott.....	Mayer Building.	Milwaukee, Wis.
Eastern Glass & Bottle Co.....	73 Fifth Street.	Portland, Ore.
E. C. Campbell.....	1425 Wewatta Street.	Denver, Col.
Linton & Scott.....	923 Merchants National Bank Building.	St. Paul, Minn.
Geo. H. Denison.....	151 S. Main Street.	Memphis, Tenn.
D. S. Harwood.....	107 Broadway National Bank Building	Richmond, Va.
Linton & Scott.....	Woodmen of World Building.	Omaha, Neb.
Reinhart Brokerage Co.....	First National Bank Building.	Houston, Texas ^s
J. L. Price Brokerage Co.....	Board of Trade Building.	St. Joseph, Mo.

FOREIGN REPRESENTATIVES

Reade, Morrill & Co.....	26-28 Holborn Viaduct, E. C.	London, England
Emilio Moran.....	Lista de Corres.	Buenos Aires, Argentine, S. A.

INDEX

	Page
Albion Jars.....	46
Allowances.....	8
American Horseradish.....	23
American Fruit Jar.....	68
American Metal Cap.....	74
Ammonias.....	124
Anchor Jars.....	42-43
Barrel Mustards.....	51
Bell Pepper Sauce.....	107
Blacking Bottles.....	132-133
Bluings.....	124, 133
Bucket Mustards.....	50
Candy Jars.....	86-88
Catsups.....	98-99
Cheese Jar.....	136
Cherry Shape Olives.....	82-83
Chili Powder.....	134
Chili Sauce.....	110-111
Chow Chows.....	24
Cloverleaf Olives.....	84
Columbia Jars.....	56
Concave Mustards.....	49
Concave Pickles.....	25
Crushed Fruit Jars.....	59-68
Cylinder Footed Olives.....	76-79
Dayton Jars.....	40-41
Decagon Pickles.....	15
Dewey Mustards.....	52
Dome Mustards.....	45-48
Emblem Jars.....	32-33, 45
Emblem Pickle.....	25
English Style Olives.....	85
Express Jars.....	55
Extracts.....	125-127
Finishes.....	10
Flat Fluted Oblong Pickles.....	15
Fluted Candy Jars.....	86-87
Fluted Mustards.....	52
Fluted Olives.....	85
Fruit Jars.....	59-68
Grape Juice.....	101
Honey Jars.....	54-55
Horseradish Bottles.....	22-23
Ideal Pickles.....	16-17
Imperial Pickles.....	24
Individual Service Jars.....	95-96
Inks.....	129
Jam Jars.....	56
Jugs.....	115-121
Keystone Horseradish.....	23
Lightning Style Jars.....	59-68
Massage Cream.....	134

	Page
Moulds.....	9
Mustard Milks.....	47
Mustard Ware.....	31-53
Net Weight Law.....	122
Oblong Pickles.....	12-13
Octagon Pickles.....	20
Octagon Jars.....	34-39
Octagon Olives.....	83
Octagon Peppers.....	90
Olive Oils.....	113-114
Olive Bottles.....	75-85
Olympia Pickles.....	12
Oval Pickles.....	18, 20-21
Oval Octagon Pickles.....	12
Oyster Cocktail.....	95
Packers.....	115-121
Panels.....	125-127
Peppers.....	90-93
Pepper Sauce.....	106-109
Piasa Pepper Sauce.....	107
Pickle Bottles.....	11-25
Polish Bottles.....	132-133
Pomades.....	129
Pot Mustards.....	52
Preserve Ware.....	31-68
Pure Food Law.....	58
Quinines.....	132
Representatives.....	4
Reshipping Cases.....	69-73
Ring Pepper Sauce.....	106
Ring Pickles.....	14
Rose Jars.....	50
Round Horseradish.....	23
Round Taper Preserves.....	53
Salts.....	90-93
Salad Dressing.....	110-112
Shellac Jars.....	130-131, 136
Sewing Machine Oil.....	128
Sexagon Pickles.....	14
Spring Top Closure.....	26-29
Square Pickles.....	21
Squat Octagon Mustards.....	53
St. Nicholas Jars.....	46
Sugar Shakers.....	91-92
Syrup Bottles.....	102-103
Tablet Jars.....	88, 135
Terms.....	8
Tabasco Sauce.....	108
Triangle Pickles.....	19, 20
Varsity Olives.....	84
Vinegar Bottles.....	100-101
Water Bottle.....	137
Weights.....	142-144
Worcestershire Sauce.....	107

INTRODUCTORY

In presenting to our friends and patrons this new edition of our illustrated catalog, we wish to express our appreciation of their past generous business favors, and hope for a continuance of the same. Of necessity we only display in this catalog our regular stock ware, a full assortment of which we aim to have on hand at all times with which to fill all "rush" orders, and not the many special shapes, for which we have the moulds belonging to our customers.

THE KEARNS-GORSUCH
BOTTLE CO.

ZANESVILLE, OHIO

ALLOWANCES

All our goods are packed and loaded by workmen of long experience in handling glass; hence, we make no allowance for breakage, our bills of lading being guarantee of good order when shipped. Customers should refuse to receipt for goods, except *IN BAD ORDER* and subject to claim, should they show evidence of excessive breakage, or other damage upon arrival. Claims for missing packages, or excessive breakage, should be made to transportation company.

TERMS

Payments are expected in all cases in funds equal to U. S. Treasury Notes or exchange on New York or Chicago. Orders from parties with whom we are not acquainted should be accompanied with cash or satisfactory reference. Our regular terms are 30 days, or 1% discount for cash within ten days from date of invoice.

MOULDS

Many bottle users prefer shapes and designs of their own. We have our own mould shop and make a specialty of private mould work.

Moulds furnished for any design or style of bottle at the lowest possible cost for first-class work.

We guarantee our moulds to be of the best workmanship.

In ordering a special shape, an exact model of same should be furnished. If impossible to furnish model, we will submit a wooden model of the desired bottle, if furnished with the idea by drawing or otherwise.

If we make the moulds, no expense will be attached for models; otherwise, a charge of actual cost of producing same will be necessary.

In getting up designs for bottles, avoid sharp corners, as round corners make a stronger bottle.

Special moulds should be in pairs for each size and shape; better and more uniform bottles are always obtained when moulds are worked in pairs.

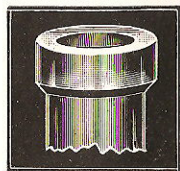
VARIOUS STYLES OF FINISH



Prescription Lip



Panel Lip



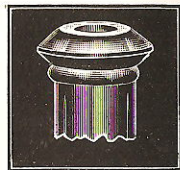
Packer Lip



Flare Mouth

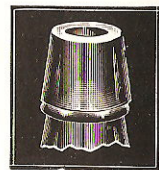


Oil Finish

Double Ring
Finish

V.HANNUM Z.O.

Bead Finish

Saucer Shape
Prescription Lip

Brandy Finish

The above finishes are those ordinarily used.
Any special finish we will make to your liking.

NOTE

Finishes—Under this heading the abbreviation S. T. denotes Spring Top; A. denotes American Cap; P. denotes Phoenix Cap or Perfection Cap.

Example:—On page 18 we can make No. 31 8-oz. Olympia for No. 53 Spring Top, No. 53 Phoenix or Perfection Cap or No. 48 American Cap finishes.

PICKLE BOTTLES

We have the most complete line of different styles and sizes of Pickle Bottle Moulds of any factory in the country.

If you are in the market, we have a bottle that will fit your wants.

We will take pleasure in getting up a line of bottles of your own ideas, or will assist you in making what you want, and submit wooden models at any time.



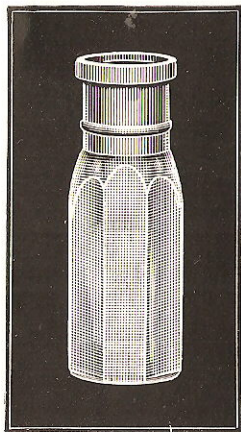
No. 31

OLYMPIA

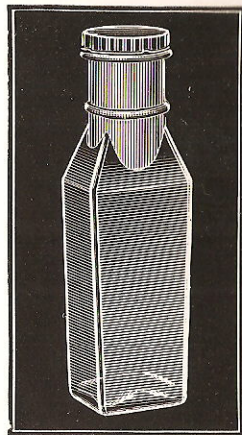
Mould No.	Capacity Oz.	Finishes
82m	5½	No. 43P—38A
91m	6	No. 1 S.T.—43A—48A
83m	7	No. 48A
31m	8	No. 53 S.T.—53P—48A
32m	10	No. 53 S.T.—53P—48A

OVAL OCTAGON

Mould No.	Capacity Oz.	Finishes
99m	7½	No. 53 S.T.—53P—48A
96m	9	No. 53 S.T.—53P—48A

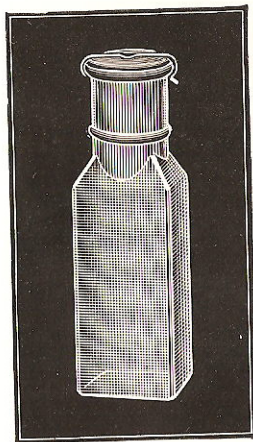


Oval Octagon

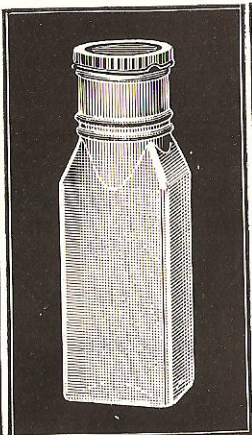


No. 4 Style
Oblong

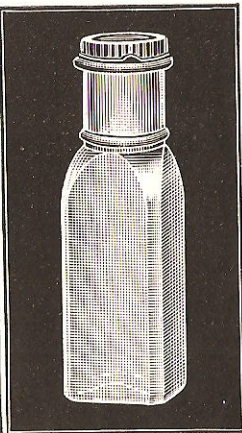
PLAIN OBLONGS



No. 1 Style



No. 2 Style



No. 3 Style

No. 1 STYLE

Mould No.	Capacity Oz.	Finishes	
		No. 1 S.T.—48 S.T.—48P—43A	No. 1 S.T.—48 S.T.—48P—43A
92m	6	No. 1 S.T.—43A—Cork	No. 1 S.T.—Cork
100m	7	No. 2 S.T.—Cork	No. 5 S.T.—58A
7m	8	No. 5 S.T.—58A	No. 5 S.T.—58A
9h	14		
10h	20		
11m	24		
12m	32		

No. 2 STYLE

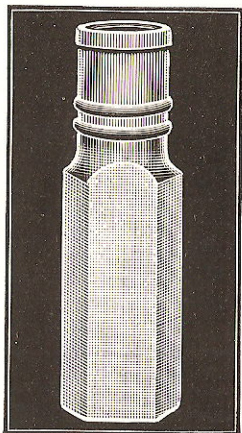
95m	8	No. 53 S.T.—53P—48A
-----	---	---------------------

No. 3 STYLE

25m	8	No. 53 S.T.—53P—48A
-----	---	---------------------

No. 4 STYLE

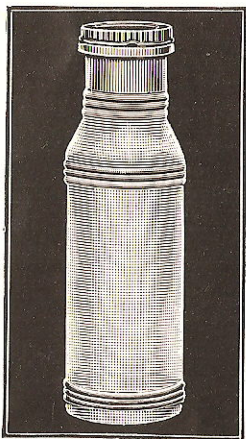
13m	10	No. 53 S.T.—53P—48A
14m	14	No. 58 S.T.—58P—53A



SEXAGON

Mould No.	Capacity Oz.	Finishes
93m	8	No. 53 S.T.—53P—48A
94m	11	No. 53 S.T.—53P—48A

Both of these bottles also made for cork finish.



RING

Mould No.	Capacity Oz.	Finishes
85m	14	No. 53 S.T.—53P—48A
86m	18	No. 58 S.T.—58P—53A

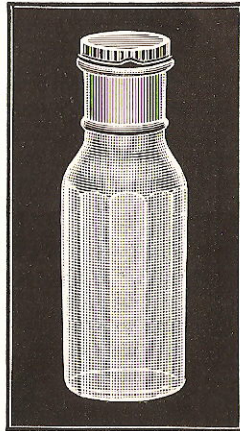
FLAT FLUTED OBLONG

Mould No.	Capacity Oz.	Finishes
38m	32	No. 5 S.T.—58A

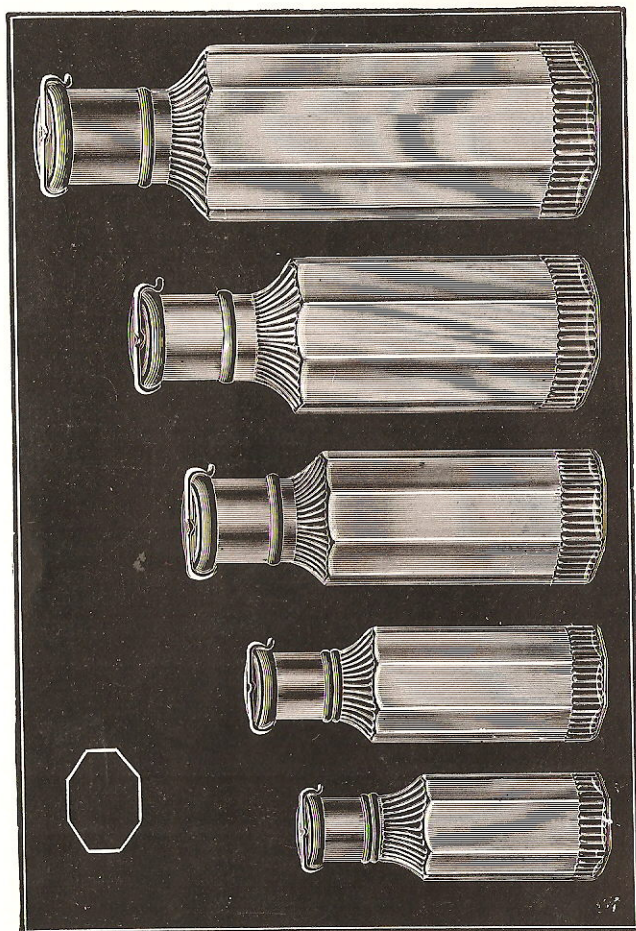


TAPER DECAGON

Mould No.	Capacity Oz.	Finishes
24m	8	No. 53 S.T.—53P—48A

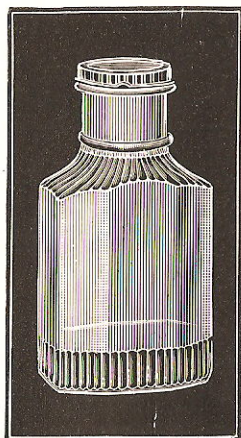
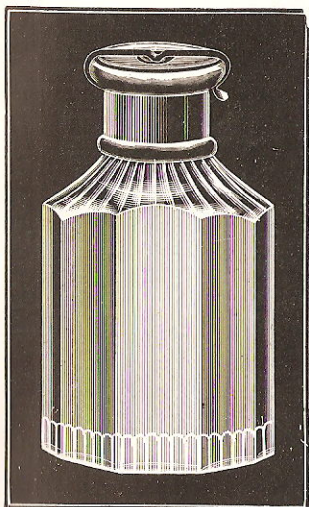


TALL FLUTED IDEALS



See page 17 for sizes and finishes.

SQUAT IDEALS



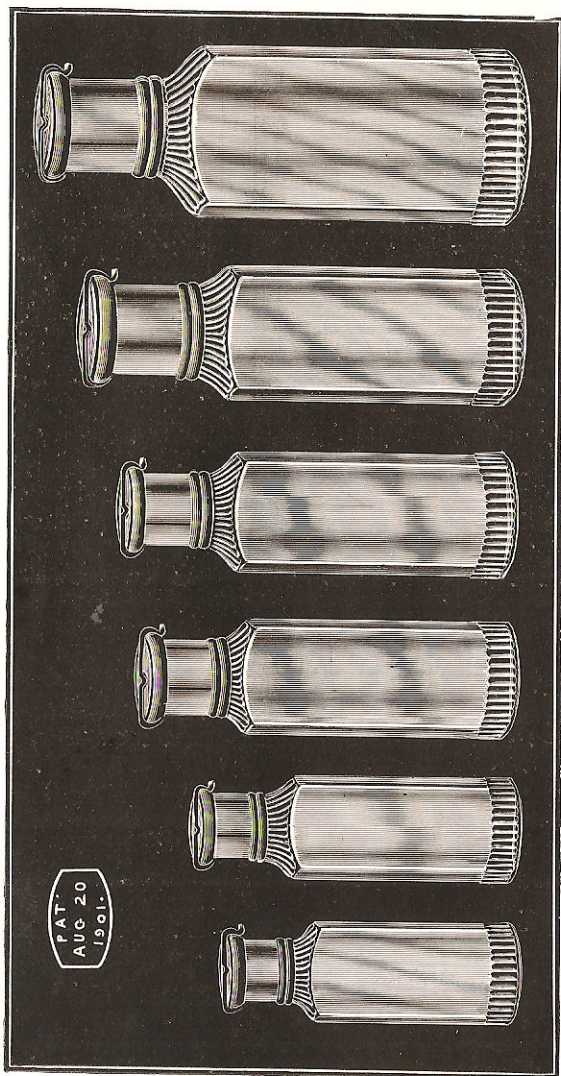
SQUAT IDEALS

Mould No.	Capacity Oz.	Finishes
30m	20	No. 58 S.T.—53A
948h	26	No. 5 S.T.—Cork
40h	32	No. 5 S.T.—Cork

TALL FLUTED IDEALS

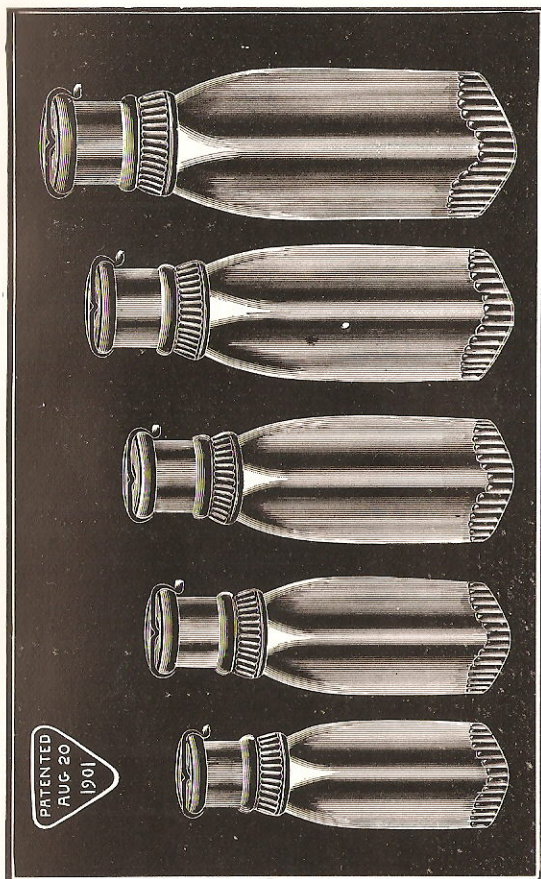
Mould No.	Capacity Oz.	Finishes
19m	9	No. 1 S.T.—43A—Cork
20h	14	No. 2 S.T.—Cork
21m	24	No. 5 S.T.—58A
22m	32	No. 5 S.T.—58A

TALL FLUTED OVALS



See page 20 for sizes and finishes.

FLUTED TRIANGLES



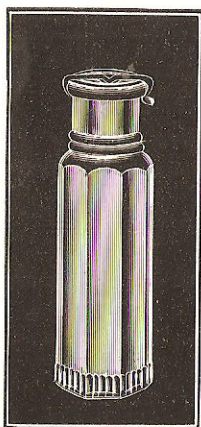
See page 20 for sizes and finishes.

TALL FLUTED OVALS

Mould No.	Capacity Oz.	Finishes
29m	6	No. 1 S.T.—43A
1m	7	No. 1 S.T.—43A
2m	9	No. 1 S.T.—43A
3h	14	No. 2 S.T.—Cork
4h	16	No. 2 S.T.—Cork
5m	24	No. 5 S.T.—58A
6m	32	No. 5 S.T.—58A

FLUTED TRIANGLES

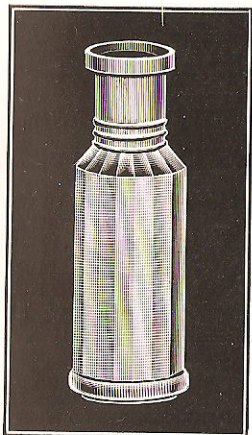
Mould No.	Capacity Oz.	Finishes
15m	9	No. 1 S.T.—43A
61h	14	No. 2 S.T.—Cork
31h	32	No. 5 S.T.—Cork



No. 27

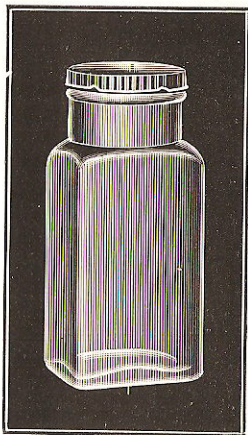
TALL FLUTED OCTAGON

Mould No.	Capacity Oz.	Finishes
27m	9	No. 1 S.T.—43A



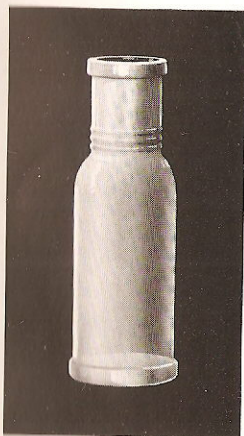
No. 90

Mould No.	Capacity Oz.
80m	5 1/2
8m	8
90m	8
47m	9 3/4
619m	12

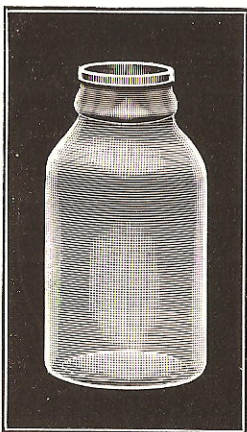


No. 619

Finishes
No. 43P—43A
No. 48 S.T.—48P—43A
No. 48 S.T.—48P—43A
No. 42 Goldy
No. 58A



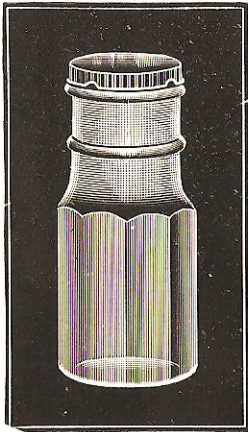
No. 8



No. 47



No. 80



No. 17

HORSERADISH BOTTLES

Mould
No.
17m

Capacity
Oz.
7

Finish
No. 51A



No. 635

Mould
No.
635m

Capacity
Oz.
6

Finish
No. 48A



American

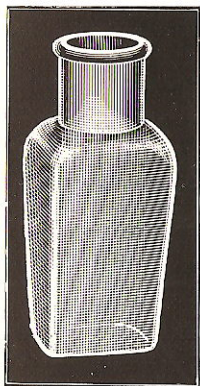
HORSERADISH BOTTLES



8 oz. Round

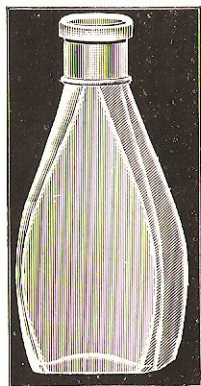
American Horseradish

Mould No.	Capacity Oz.	Finishes
62m	3	Cork
63m	3 $\frac{3}{4}$	Cork
49m	4	Cork
50m	5	Cork
51m	6	No. 43A—Cork
52m	7	Cork
7m	8	Cork



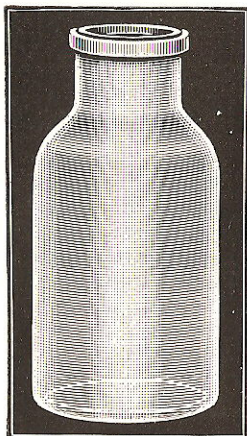
No. 16 Keystone

Mould No.	Capacity Oz.
16m	6
61h	8



No. 61 Ohio

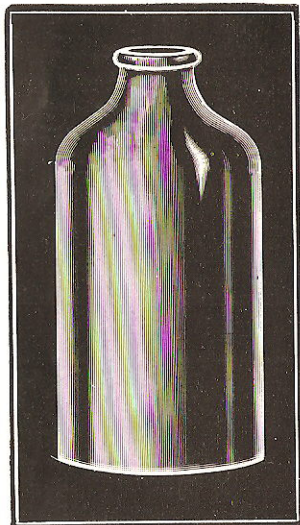
Finishes
No. 43A—Cork
Cork



ENGLISH CHOW

Mould No.	Capacity Oz.	Finishes
37m	13	No. 48A
43m	13½	No. 53 S.T.—53P—48A
45m	20	No. 2 S.T.—48A
46m	32	No. 63 S.T.—63P—58A
48m	36	No. 63 S.T.—63P—58A

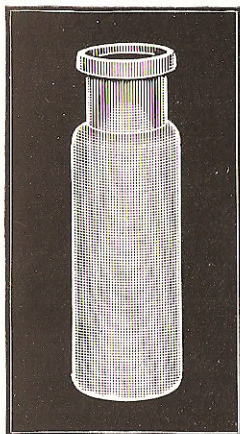
No. 37 is fluted at bottom



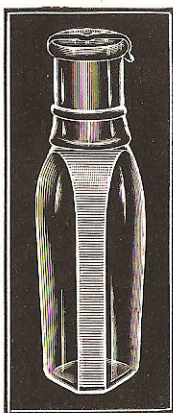
IMPERIAL

Mould No.	Capacity Oz.	Finishes
78m	128	No. 75 S.T.—75P—70A

No. 78



No. 87



No. 77



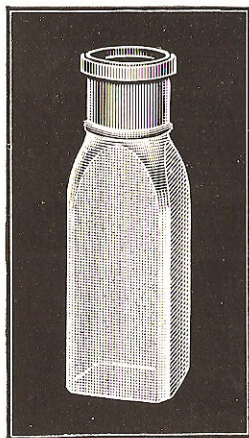
No. 89

Mould
No.
53m
77h
89m
87m
98m

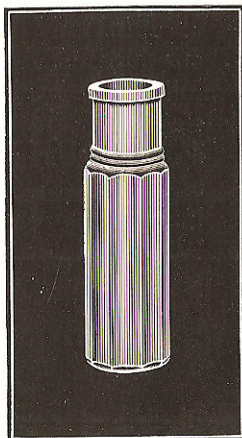
Capacity
Oz.
6
8
9
10
10

Style
Concave
Triangle
Decagon
Emblem
Square

Finishes
Cork
No. 1 S.T.—Cork
No. 53 S.T.—53P—48A
No. 53 S.T.—53P—48A
No. 53 S.T.—53P—48A



No. 98



No. 53

OUR SPRING TOP CLOSURE

We desire to call especial attention to our "Spring Top Closure," which defies all competition. It is especially adapted for Pickle, Mustard and Preserve Jars, and can be applied to all wide-mouth ware. Knowing the great need of a neat, simple and effective closure for this class of goods, we realize that with the "Spring Top Closure" the acme of perfection is reached. It is the only glass top closure with a rubber gasket having a *DIRECT CENTER PRESSURE*, which causes a perfect seal. We are the inventors and exclusive manufacturers of this closure and it can be obtained only from us direct or through our duly authorized agents. We cheerfully recommend it to all users of this class of ware as the most practical, economical and easily adjusted closure offered to the trade. Our constantly increasing business for this class of goods is a guarantee of its great favor. Investigate and you will adopt.

PERSPECTIVE PARTS OF THE SPRING
TOP CLOSURE



DIMENSIONS OF DIFFERENT SIZES

No. 1.....	1 $\frac{1}{4}$ inches inside of neck, 48 m/m
No. 2.....	1 $\frac{7}{16}$ inches inside of neck, 53 m/m
No. 3.....	1 $\frac{7}{16}$ inches inside of neck, 53 m/m
No. 4.....	1 $\frac{3}{4}$ inches inside of neck, 58 m/m
No. 5.....	1 $\frac{13}{16}$ inches inside of neck, 63 m/m
No. 6.....	2 $\frac{1}{16}$ inches inside of neck, 66 m/m
No. 7.....	2 $\frac{1}{4}$ inches inside of neck, 75 m/m

IMPROVED SPRING TOP CLOSURE

A great many packers in making a contract for a season's supply of glass-ware want a Bottle or Jar that can be used for more than one top or closure, and to meet this demand, we have perfected the Improved Spring Top Closure.

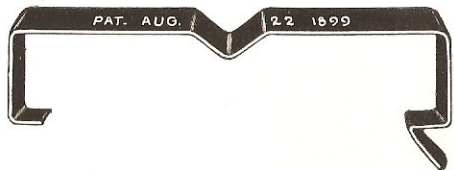
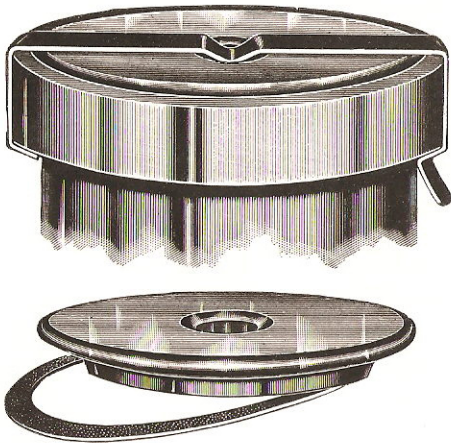
This closure fits a specially made Phoenix Finish, and we are now making all our Phoenix Finish ware to fit any of the many tin top closures as well as this Improved Glass Top.

The Improved Spring Top Closure has the same good points as our regular Spring Top Closure: a glass cap with a small bead on the under side which imbeds itself in a high-grade rubber ring when the *DIRECT CENTER PRESSURE* is applied by our improved oil tempered, non-corrosive spring steel clamp, thus forming an airtight seal.

We make the Improved Spring Top Closure in four sizes—48, 53, 58 and 63 m/m. If any other size is desired, kindly write us.

It will pay you "big" to give this closure a trial.

PERSPECTIVE PARTS OF THE IMPROVED
SPRING TOP CLOSURE



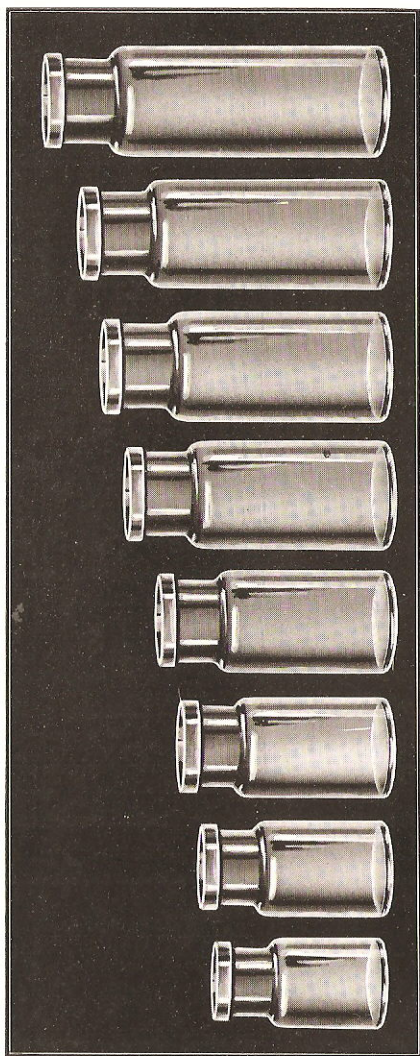
DIFFERENT SIZES

No. 48.....	1 1/4 inches inside of neck
No. 53.....	1 7/16 inches inside of neck
No. 58.....	1 5/8 inches inside of neck
No. 63.....	1 3/4 inches inside of neck

OUR machine bottle
moulds are made with
Interchangeable Tops, which
enables us to supply our
bottles for various
styles of closure.

**MUSTARD
AND
PRESERVE
WARE**

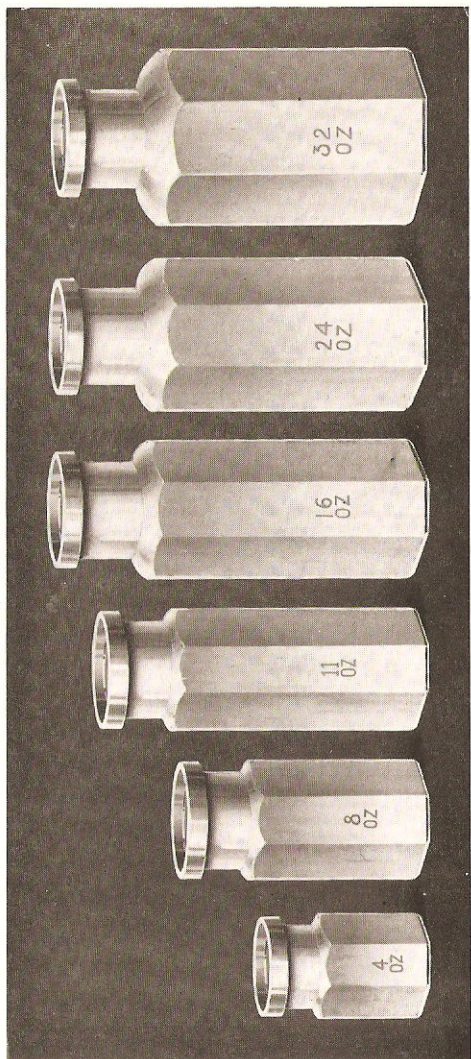
EMBLEM JARS



EMBLEM JARS

Mould No.	Capacity Oz.	Finishes	Height	Diameter	Neck Label Space
148m	4	No. 48 S.T.—48P—43A	4	2 1/8	7/8
149m	6	No. 53 S.T.—53P—48A	4 5/16	2 5/16	7/8
175m	6 1/2	No. 53 S.T.—53P—48A	4 7/8	2 1/4	3/4
150m	7	No. 58 S.T.—58P—53A	4 7/8	2 1/2	13/16
145m	7	No. 58 S.T.—58P—53A	5 1/2	2 5/16	5/16
151m	8	No. 58 S.T.—58P—53A	5 9/16	2 1/2	1
143m	10	No. 58 S.T.—58P—53A	6 1/8	2 5/8	1
144m	12	No. 58 S.T.—58P—53A	6 3/4	2 5/8	1 1/16
152m	14	No. 58 S.T.—58P—53A	7 1/4	2 5/8	1 1/8
153m	16	No. 58 S.T.—58P—53A	8 1/16	2 3/4	1 3/16

ROSEMARY OCTAGONS



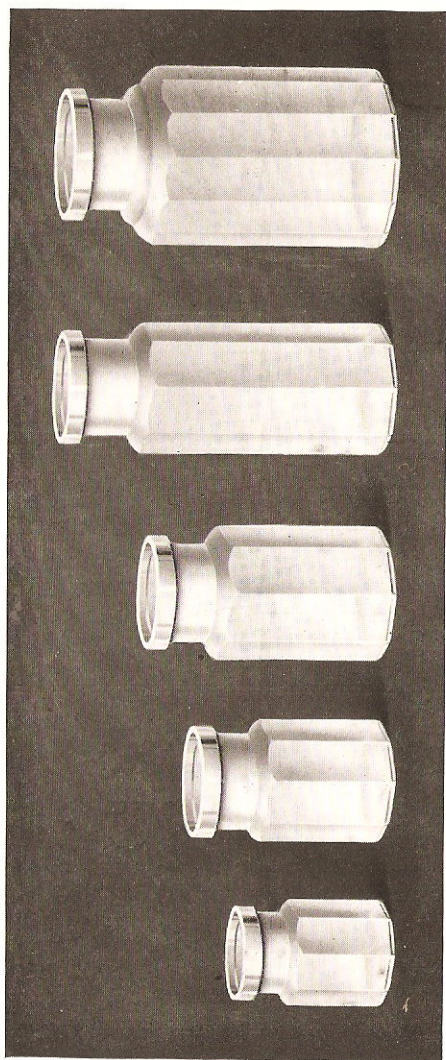
ROSEMARY OCTAGONS

Mould No.	Capacity Oz.	Finishes	Height	Diameter	Neck Label Space
*649m	2	No. 48 S.T.—48P—43A	2 ³ / ₁₆	1 ³ / ₄	9/ ₁₆
194m	4	No. 53 S.T.—53P—48A	3 ⁷ / ₁₆	2 ³ / ₁₆	5/ ₈
106m	8	No. 63 S.T.—63P—58A	5 ¹ / ₁₆	2 ¹ / ₂	7/ ₈
603m	11	No. 63 S.T.—63P—58A	6 ³ / ₄	2 ⁷ / ₁₆	1
136m	16	No. 63 S.T.—63P—58A	7 ⁹ / ₁₆	2 ³ / ₄	1 ⁵ / ₁₆
196m	24	No. 63 S.T.—63P—58A	7 ¹ / ₂	3 ⁵ / ₁₆	1 ⁵ / ₁₆
602m	32	No. 63 S.T.—63P—58A	7 ⁹ / ₁₆	3 ¹³ / ₁₆	1 ³ / ₈

*Not illustrated in group cut.

No. 106m and No. 136m also finished for No. 58 Anchor Cap.

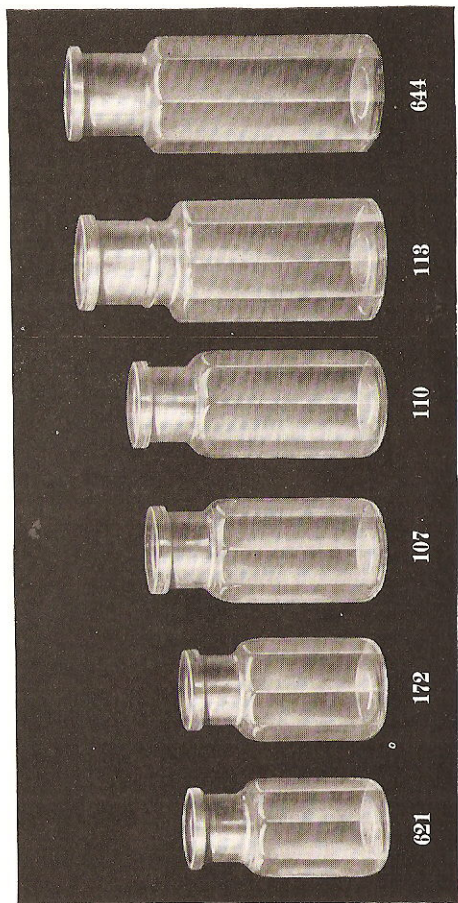
VIRGINIA OCTAGONS



VIRGINIA OCTAGONS

Mould No.	Capacity Oz.	Finishes	Height	Diameter	Neck Label Space
600m	4	No. 53 S.T.—53P—48A	$3\frac{7}{16}$	$2\frac{1}{8}$	$\frac{3}{8}$
601m	$7\frac{1}{2}$	No. 63 S.T.—63P—58A	$4\frac{3}{8}$	$2\frac{9}{16}$	$\frac{7}{8}$
609m	11	No. 63 S.T.—63P—58A	$5\frac{3}{8}$	$2\frac{3}{4}$	$\frac{7}{8}$
608m	15	No. 63 S.T.—63P—58A	$7\frac{3}{8}$	$2\frac{11}{16}$	$1\frac{1}{8}$
604m	30	No. 70P—66A	$7\frac{5}{16}$	$3\frac{3}{4}$	$1\frac{5}{8}$

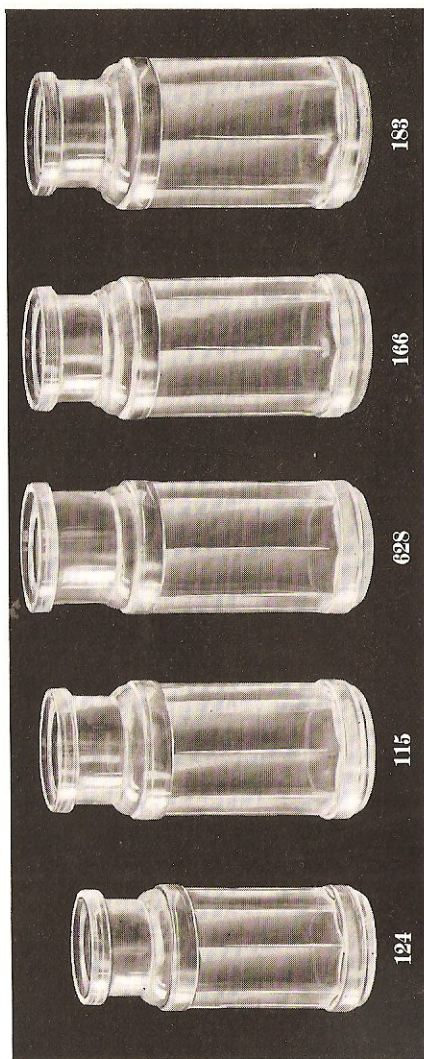
UNIVERSAL OCTAGONS



UNIVERSAL OCTAGONS

Mould No.	Capacity Oz.	Finishes	Height	Diameter	Neck Label Space
621m	7	No. 53 S.T.—53P—48A	4 $\frac{7}{8}$	2 $\frac{3}{8}$	$\frac{3}{4}$
172m	8	No. 53 S.T.—53P—48A	4 $\frac{5}{16}$	2 $\frac{1}{2}$	$\frac{7}{8}$
107m	10	No. 58 S.T.—58P—53A	5 $\frac{3}{4}$	2 $\frac{1}{2}$	1
110m	12	No. 58 S.T.—58P—53A	6 $\frac{1}{4}$	2 $\frac{5}{8}$	1
644m	16	No. 63 S.T.—63P—58A	7 $\frac{9}{16}$	2 $\frac{7}{8}$	1 $\frac{1}{8}$
113m	18	No. 63 S.T.—63P—58A	7 $\frac{1}{2}$	3 $\frac{1}{8}$	1 $\frac{1}{4}$

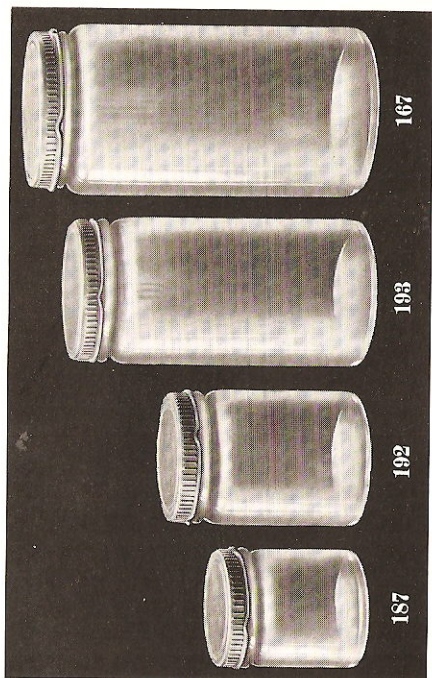
DAYTON JARS



DAYTON JARS

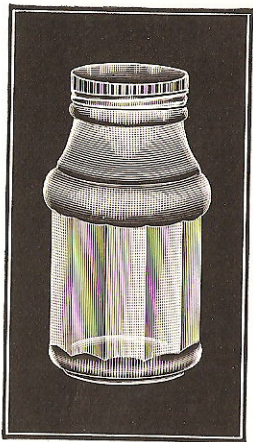
Mould No.	Capacity Oz.	Finishes	Height	Diameter	Neck Label Space
124m	6	No. 53 S.T.—53P—48A	5 $\frac{1}{16}$	2	$\frac{3}{4}$
115m	8	No. 58 S.T.—58P—53A	5 $\frac{11}{16}$	2 $\frac{1}{4}$	$\frac{9}{16}$
628m	8	Screw	5 $\frac{7}{8}$	2 $\frac{1}{4}$	$\frac{3}{4}$
166m	9	No. 58 S.T.—58P—53A	6 $\frac{1}{8}$	2 $\frac{3}{8}$	$\frac{3}{4}$ Also Screw Finish
183m	10	No. 58 S.T.—58P—53A	5 $\frac{15}{16}$	2 $\frac{1}{2}$	$\frac{11}{16}$ Also Screw Finish

ANCHOR JARS



ANCHOR JARS

Mould No.	Capacity Oz.	Finishes	Height	Diameter
187m	2	No. 48A	$2\frac{3}{16}$	$1\frac{7}{8}$
192m	4	No. 53A	3	$2\frac{3}{16}$
193m	8	No. 58A	$4\frac{11}{16}$	$2\frac{3}{8}$
167m	12	No. 63A	$5\frac{3}{8}$	$2\frac{3}{4}$



No. 612

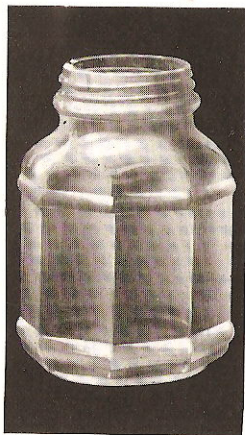
Mould No.	Capacity Oz.
634	5
622	6 $\frac{3}{4}$
640	8
641	8
642	8
612	8
610	12

No. 610

Finishes

- No. 53 S.T.—53P—48A
- No. 48A
- Screw
- Screw
- Screw
- Screw
- No. 63 S.T.—63P—48A

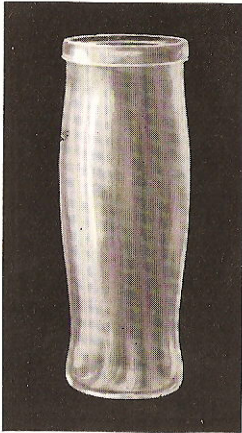
Nos. 622 and 634



No. 640

No. 641

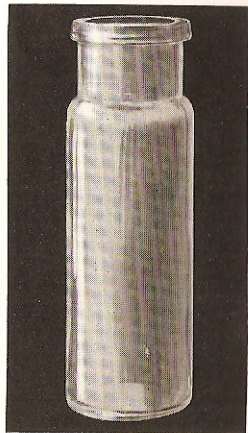
No. 642



Nos. 625 and 626

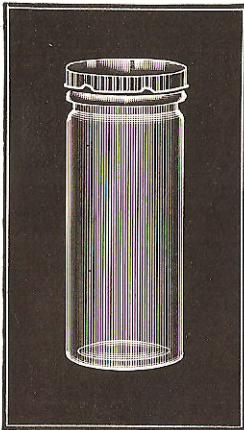


No. 138

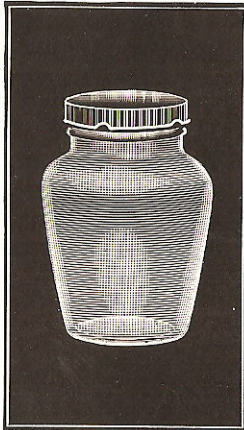


No. 611

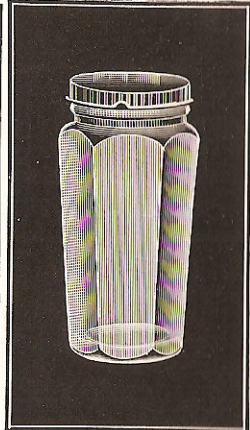
Mould No.	Capacity Oz.	Finishes
624m	3 ³ / ₄	No. 48A
614m	4 ¹ / ₄	No. 48A
616m	5 ¹ / ₂	No. 48A
625m	6	No. 53 Anchor No. 53 Reseal
138m	10	No. 58 Anchor
626m	12	No. 63 Anchor
611m	12	No. 58 S.T.—58P—53A



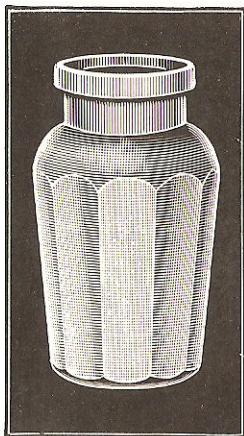
No. 614



No. 616

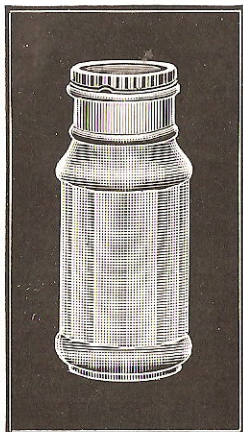


No. 624



ST. NICHOLAS

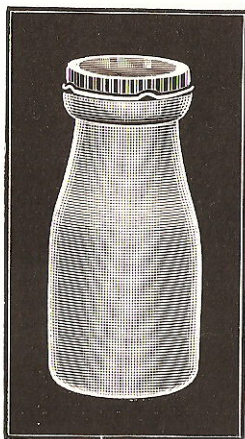
Mould No.	Capacity Oz.	Finishes
178m	10	No. 58 S.T.—58P—53A
165m	11	No. 58 S.T.—58P—53A
160m	12	No. 63 S.T.—63P—58A



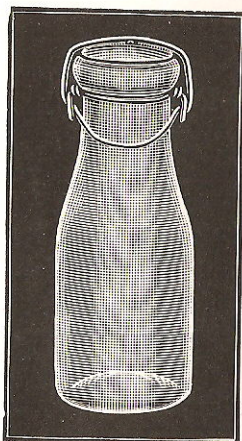
ALBION

Mould No.	Capacity Oz.	Finishes
117m	7	No. 58 S.T.—58P—53A
170m	8	No. 58 S.T.—58P—53A
116m	10	No. 58 S.T.—58P—53A

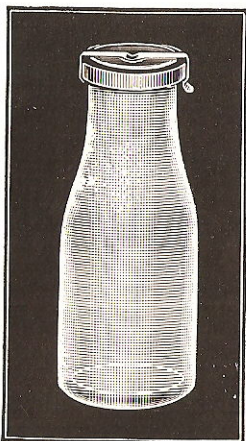
MUSTARD MILKS



No. 164



No. 163



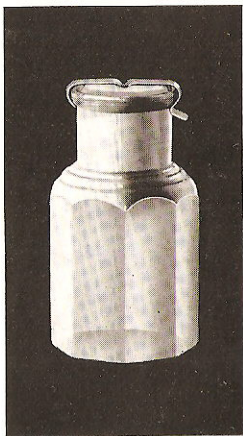
No. 161

Mould No.	Capacity Oz.	Finishes
164m	6½	No. 48A
146m	8	No. 48A
161m	14	No. 53 S.T.—53P—48A
163m	16	No. 58 S.T.—58P—53A

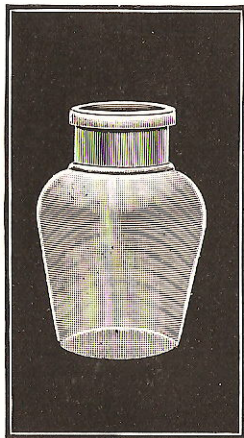
All of these can be finished for paper disc.

Nos. 161 and 163 can also be finished with lightning trimming. (See cut of No. 163 above.)

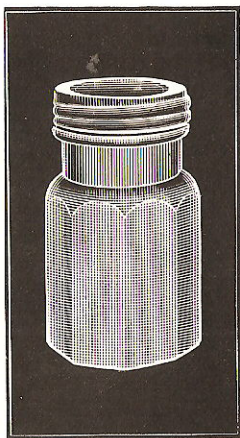
MUSTARD PACKAGES



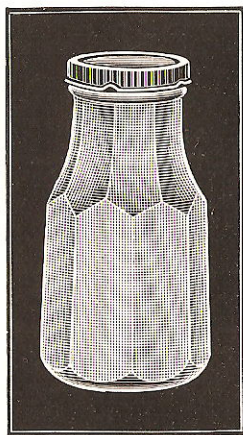
No. 104



No. 118



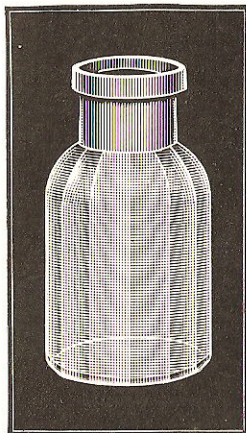
No. 605



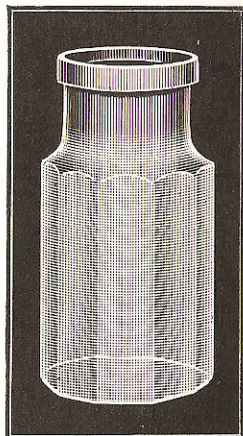
No. 128

See page 51 for sizes and finishes.

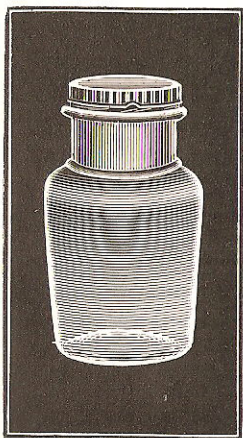
MUSTARD PACKAGES



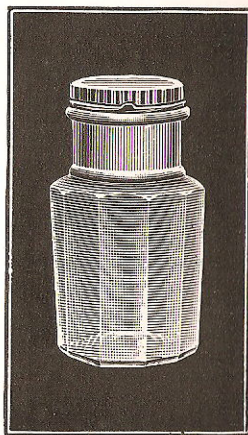
No. 177



No. 137

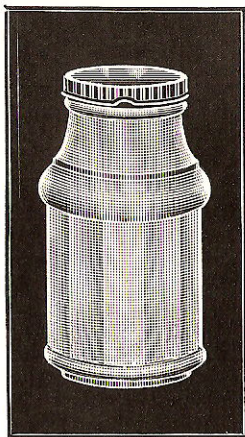


No. 158



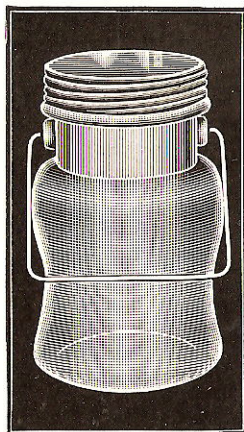
No. 157

See page 51 for sizes and finishes.



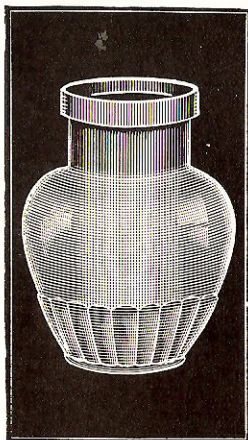
No. 606

MUSTARD
PACKAGES



No. 197

THE GLASS WITH CLASS



No. 127



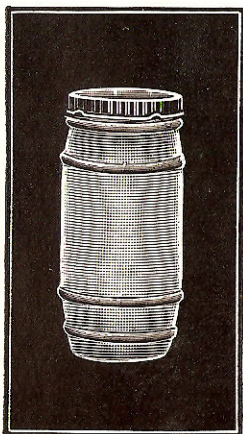
Nos. 125, 159

See page 51 for sizes and finishes.

MUSTARD PACKAGES

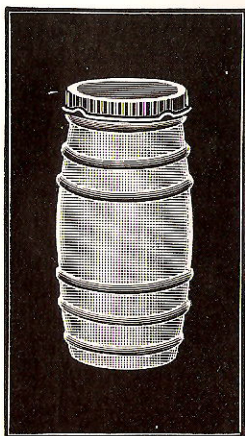
Mould No.	Capacity Oz.	Finishes
157m	6	No. 53 S.T.—53P—48A
177m	8	No. 53 S.T.—53P—48A
137m	10	No. 58 S.T.—58P—53A
158m	7	No. 53 S.T.—53P—48A
118m	7	No. 58 S.T.—58P—53A
127m	10	No. 58 S.T.—58P—53A
606m	8	No. 48A
197m	12	Screw
159m	11	No. 51A
125m	11	No. 51A
128m	8	No. 53 S.T.—53P—48A
605m	6	Screw
104m	8	No. 53 S.T.—53P—48A

BARREL MUSTARDS



No. 1 Style

Mould No.	Capacity Oz.
637	3
620	4
185	4
176	4½
638	6



No. 2 Style

Finishes
No. 43A—Style No. 2
No. 48A—Style No. 2
No. 48A—Style No. 1
No. 48A—Style No. 2
No. 53A—Style No. 2

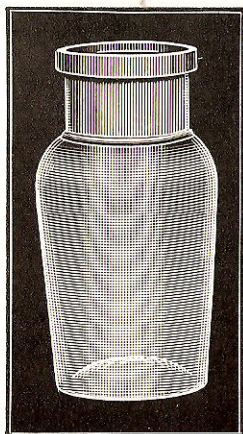
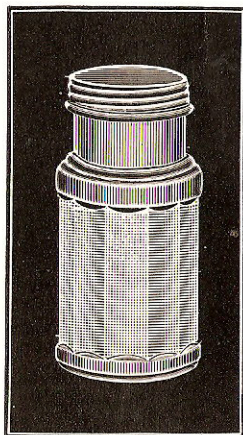


POT MUSTARDS

Mould No.	Capacity Oz.	Finishes
142m	6	Cork
140m	8	Cork

FLUTED MUSTARD

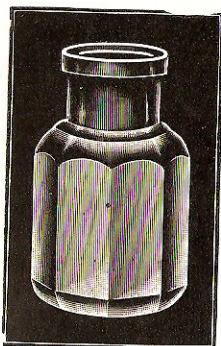
Mould No.	Capacity Oz.	Finish
139m	10	Screw



TAPER DEWEY

Mould No.	Capacity Oz.	Finishes
122h	5	No. 1 S.T.—Cork
123m	10	No. 58 S.T.—58P—53A

SQUAT OCTAGONS



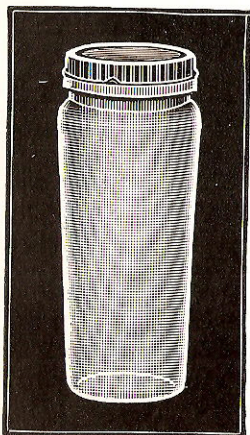
No. 155

Mould No.	Capacity Oz.
155m	14
126m	16



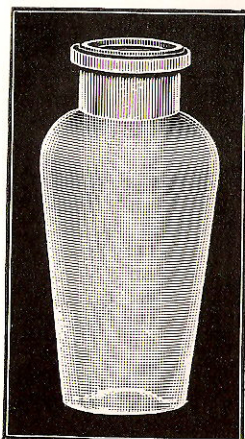
No. 126

Finishes
No. 58 S.T.—58P—53A
No. 5 S.T.—58A



No. 156

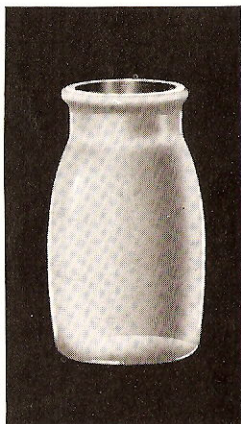
Mould No.	Capacity Oz.
156m	14
171m	23



No. 171

Finishes
No. 63A
No. 63 S.T.—63P—58A

HONEY JARS



ROUND

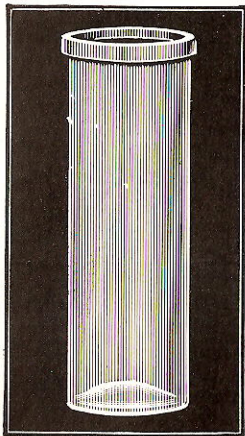
Mould No.	Capacity Lb.	Finish
650m	$\frac{1}{2}$	Disc



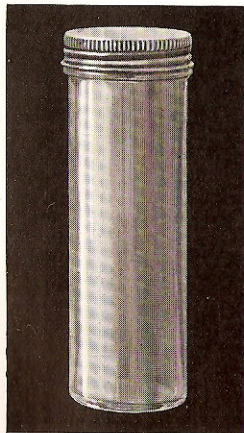
SQUARE

Mould No.	Capacity Lb.	Finishes
129h	$\frac{1}{4}$	Cork
130h	$\frac{1}{2}$	No. 1 S.T.—Cork
131h	1	No. 2 S.T.—Cork
132h	2	No. 2 S.T.—Cork

EXPRESS STYLE



Mould No.	Capacity Oz.	Finishes
174m	7	No. 58 S.T.—58P—53A
173m	12	No. 66 Phoe—63A
173m	12	No. 63 Phoe—58A



Mould No.	Capacity Oz.	Finish
618m	10	Screw

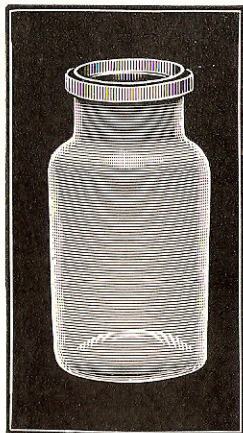
JAM JARS



No. 168



No. 169



Nos. 141 and 648

Mould No.	Capacity Oz.	Style	Finishes
195m	6	Squat Columbia	No. 58 S.T.—58P—53A
169m	10	Squat Columbia	No. 63 S.T.—63P—58A
648m	11	Jam	No. 58 S.T.—58P—53A
141m	12	Jam	No. 58 S.T.—58P—53A
168m	12	No. 80 Jam	No. 58 S.T.—58P—53A
186m	12	Squat Columbia	No. 63 S.T.—63P—58A

See also No. 610 shown on page 44.

OUR BOTTLES AND JARS

Are all made of the best quality flint glass by skilled workmen, insuring a strong, attractive package of accurate capacity.

We pay particular attention to special shapes and individual or private mould ware.

Submit samples for prices.

THE NATIONAL PURE FOOD LAW

The Food and Drugs Act, June 30, 1906, as Amended August 23, 1912
The National Pure Food Law, which was approved June 30, 1906, and which became effective January 1, 1907, is entitled: "An Act for preventing the manufacture, sale, or transportation of adulterated or misbranded or poisonous or deleterious foods, drugs, medicines, and liquors, and for regulating traffic therein, and for other purposes."

SEC. 1 makes it unlawful for any person to manufacture within any Territory or the District of Columbia any article of food or drug which is adulterated or misbranded, within the meaning of this Act; and any person who shall violate any of the provisions of this section shall be guilty of a misdemeanor, and for each offense shall, upon conviction thereof, be fined not to exceed five hundred dollars or shall be sentenced to one year's imprisonment, or both such fine and imprisonment, in the discretion of the court, and for each subsequent offense and conviction thereof shall be fined not less than one thousand dollars or sentenced to one year's imprisonment, or both such fine and imprisonment, in the discretion of the court.

SEC. 2 makes the Act applicable to all drugs introduced into any State or Territory or the District of Columbia, from any other State or Territory or the District of Columbia, or from or to any foreign country.

SEC. 3. That the Secretary of the Treasury, the Secretary of Agriculture, and the Secretary of Commerce and Labor shall make uniform rules and regulations for carrying out the provisions of this Act, including the collection and examination of specimens of foods and drugs manufactured or offered for sale in the District of Columbia, or in any Territory of the United States, or which shall be offered for sale in unbroken packages in any State other than that in which they shall have been respectively manufactured or produced, or which shall be received from any foreign country, or intended for shipment to any foreign country or which may be submitted for examination by the chief health, food, or drug officer of any State, Territory, or the District of Columbia, or at any domestic or foreign port through which such produce is offered for interstate commerce, or for export or import between the United States and any foreign port or country.

SEC. 4. That the examinations of specimens of foods and drugs shall be made in the Bureau of Chemistry of the Department of Agriculture, or under the direction and supervision of such Bureau, for the purpose of determining from such examinations whether such articles are adulterated or misbranded within the meaning of this Act; and if it shall appear from any such examination that any of such specimens is adulterated or misbranded within the meaning of this Act, the Secretary of Agriculture shall cause notice thereof to be given to the party from whom such sample was obtained. Any party so notified shall be given an opportunity to be heard, under such rules and regulations as may be prescribed as aforesaid, and if it appears that any of the provisions of this Act have been violated by such party, then the secretary of Agriculture shall at once certify the facts to the proper United States district attorney, with a copy of the results of the analysis or the examination of such article duly authenticated by the analyst or officer making such examination, under the oath of such officer. After judgment of the court, notice shall be given by publication in such manner as may be prescribed by the rules and regulations aforesaid.

SEC. 5. That it shall be the duty of each district attorney to whom the Secretary of Agriculture shall report any violation of this Act, or to whom any health or food or drug officer or agent of any State, Territory, or the District of Columbia shall present satisfactory evidence of any such violation, to cause appropriate proceedings to be commenced and prosecuted in the proper courts of the United States, without delay, for the enforcement of the penalties as in such case herein provided.

SEC. 6. That the term "drug" as used in this Act, shall include all medicines and preparations recognized in the United States Pharmacopoeia or National Formulary for internal or external use, and any substance or mixture of substances intended to be used for the cure, mitigation, or prevention of disease of either man or other animals. The term "food," as used herein, shall include all articles used for food, drink, confectionery, or condiment by man or other animals, whether simple, mixed, or compound.

SEC. 7. That for the purposes of this Act an article shall be deemed to be adulterated:

First. If any substance has been mixed and packed with it so as to reduce or lower or injuriously affect its quality or strength.

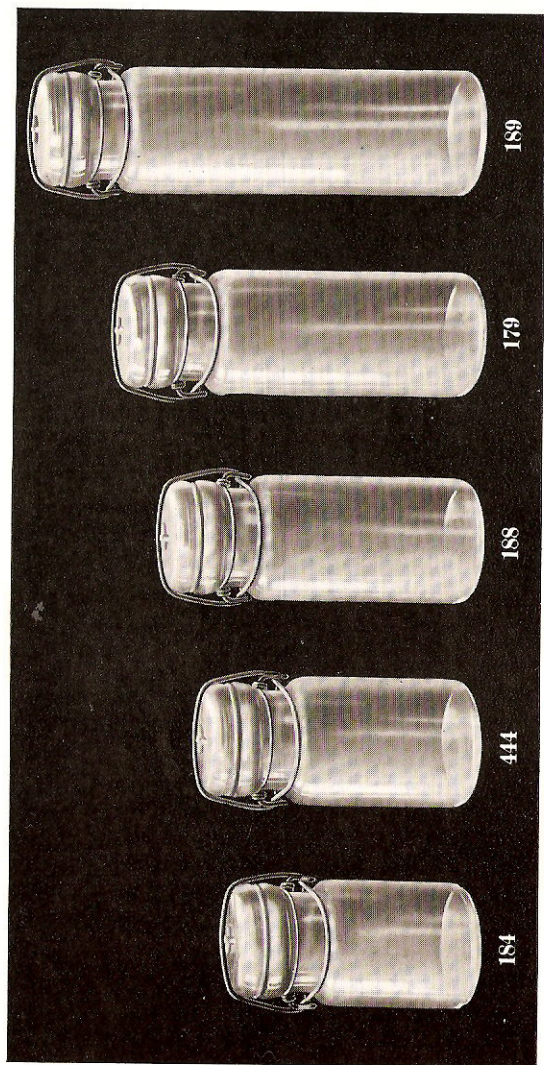
Second. If any substance has been substituted wholly or in part for the article.

(Continued on page 104)

LIGHTNING STYLE

FRUIT JARS

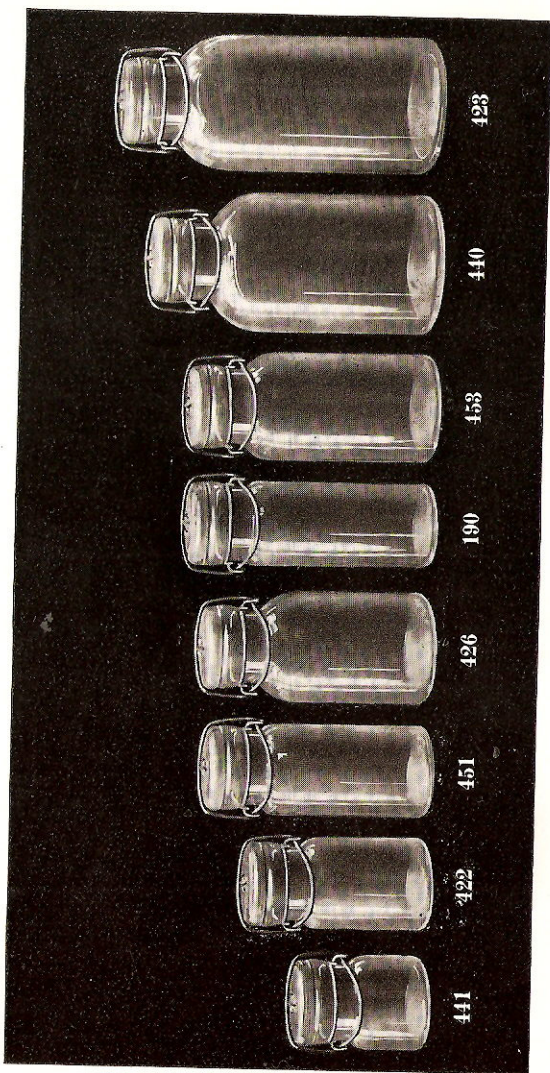
LIGHTNING STYLE PRESERVE JARS



LIGHTNING STYLE PRESERVE JARS

Mould No.	Capacity Oz.	Height	Diameter
184m	6	4 $\frac{3}{8}$	2 $\frac{9}{16}$
444m	8	5	2 $\frac{5}{8}$
188m	10	5 $\frac{7}{8}$	2 $\frac{9}{16}$
179m	12	6 $\frac{3}{4}$	2 $\frac{9}{16}$
189m	16	8 $\frac{5}{8}$	2 $\frac{9}{16}$

LIGHTNING STYLE JARS—REGULAR MOUTH



LIGHTNING STYLE JARS—REGULAR MOUTH

Mould No.	Capacity Oz.	Height	Diameter
441m	8	4 $\frac{1}{4}$	3 $\frac{3}{16}$
422m	16	6	3 $\frac{3}{16}$
190m	20	8	2 $\frac{5}{16}$
451m	23	7 $\frac{3}{8}$	3 $\frac{3}{16}$
426m	32	7 $\frac{1}{2}$	3 $\frac{7}{8}$
453m	32	8	3 $\frac{3}{4}$
440m	64	9	4 $\frac{3}{4}$
423m	64	10 $\frac{3}{8}$	4 $\frac{9}{16}$

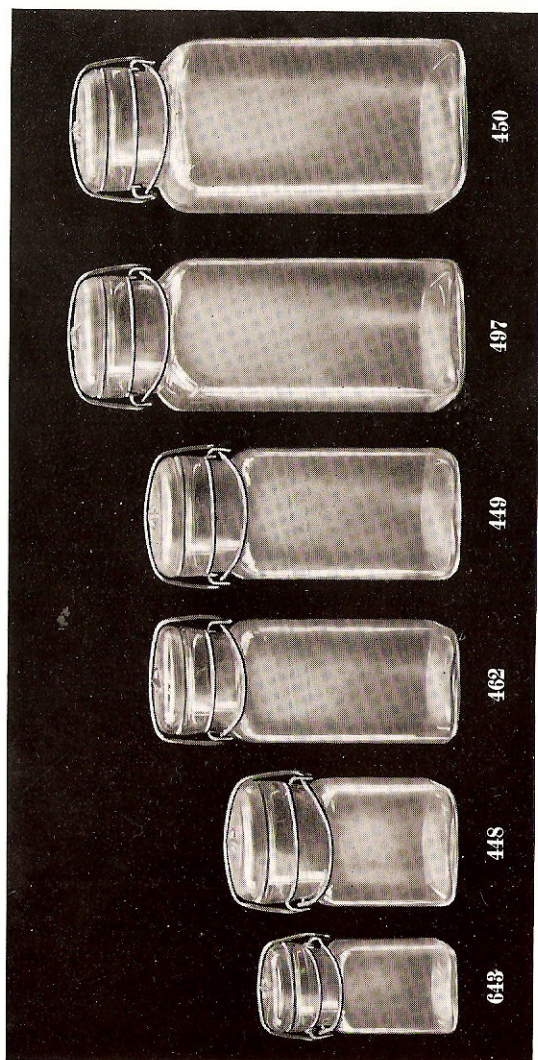
LIGHTNING STYLE JARS—WIDE MOUTH



LIGHTNING STYLE JARS—WIDE MOUTH

Mould No.	Capacity Oz.	Height	Diameter
431m	16	$4\frac{5}{8}$	$3\frac{1}{2}$
432m	32	$7\frac{1}{8}$	4
429m	32	$8\frac{1}{8}$	$3\frac{1}{2}$
433m	64	$8\frac{5}{16}$	$4\frac{3}{4}$
430m	64	$9\frac{1}{16}$	$4\frac{3}{4}$
428m	128	$11\frac{1}{4}$	6
498m	256	$13\frac{3}{8}$	$7\frac{7}{8}$

LIGHTNING STYLE JARS—SQUARE

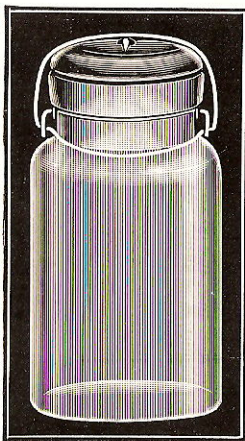


LIGHTNING STYLE JARS—SQUARE

Mould No.	Capacity Oz.	Height	Diameter
643m	8	4 $\frac{9}{16}$	2 $\frac{5}{16}$
448m	16	5 $\frac{1}{4}$	3 $\frac{1}{4}$
462m	29	7 $\frac{1}{2}$	3 $\frac{1}{4}$
449m	32	7 $\frac{1}{2}$	3 $\frac{5}{8}$
497m	50	9 $\frac{5}{8}$	3 $\frac{7}{8}$
450m	64	9 $\frac{9}{16}$	4 $\frac{3}{8}$

All these sizes with exception of No. 643m are wide mouth jars.

LIGHTNING STYLE JAR—OVAL



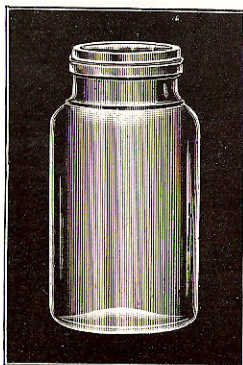
Mould
No.
446m

Capacity
Oz.
32

Height
 $7 \frac{7}{16}$

Diameter
Short Way
 $3 \frac{3}{8}$

AMERICAN FRUIT JARS



No. 434

Mould No.
434m

Capacity Oz.
32

Finish
No. 70A—70P

Also made for Perfection Cap.

**RESHIPPING
CASES**

RESHIPPING CASES

Illustrated on next few pages will interest you if you ship your goods in partition boxes. The cases that we supply are made in our own box factories; are first quality; are well put together and strong; plain or printed as you may desire; and are furnished complete with corrugated paper packing, top and bottom pads.

SAVE MONEY

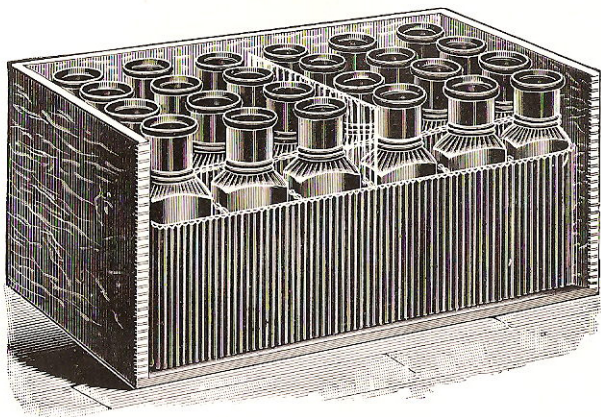
that you may now be paying for a crate that you do not want and is only a carrying package to you.

SAVE TROUBLE

and delay assembling supplies; glass and cases always come at same time; your money is not tied up in excess stock of shooks and packing.

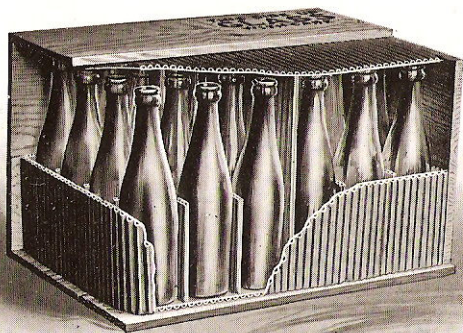
STOP BREAKAGE

which you may often have when shipped in crates; and that shortage which may be in dispute cannot occur if you use our reshipping cases.

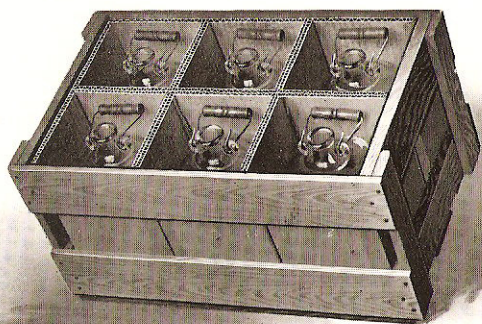


Lock-Cornered Partition Cases for
reshipping, with double-faced
strawboard fillers

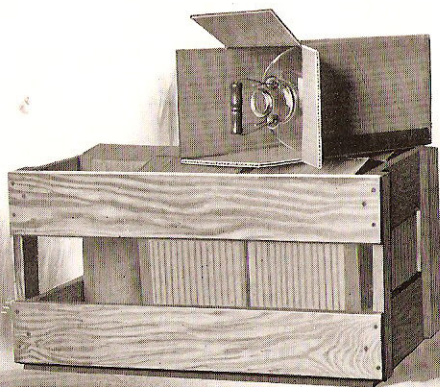
GOODS ALWAYS CLEAN WHEN RECEIVED



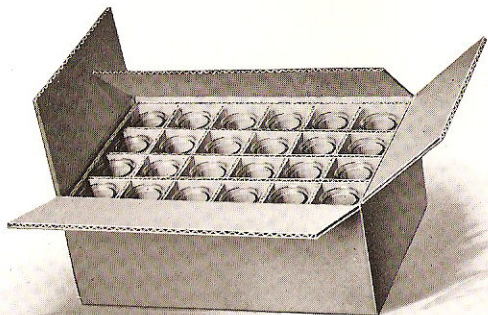
Nailed Case with strawboard partitions,
liners, top and bottom pads



This cut shows six One-Gallon Glass Jugs packed in shells in a reshipping crate. Package is complete with strawboard pad on top of jugs and wood top strips make package ready for shipment.

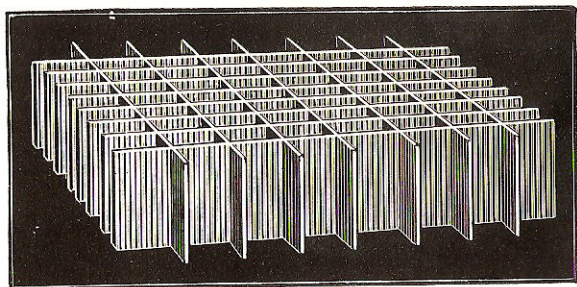


Same as other cut except that each jug is packed in a strawboard box. A better package and only slightly higher in cost.

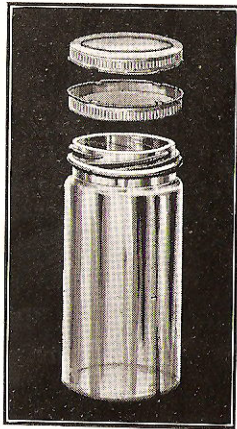


Corrugated
Paper
Reshipping
Cases

The Partition



Nailed Yellow
Pine Case
printed
in colors



AMERICAN METAL CAP

The American Metal Cap is a closure for use in connection with the packing of pickles, mustards, preserves, honey and other condiments.

No machine is required to apply it or tool to remove it from the package.

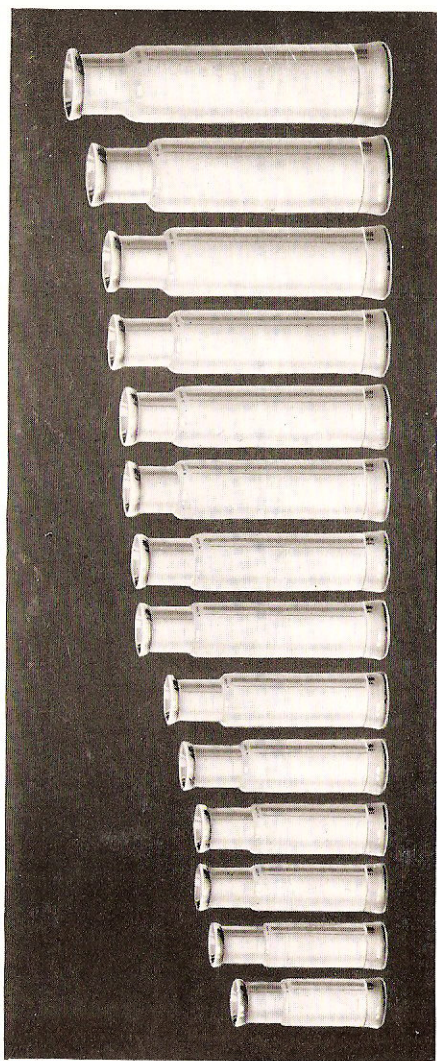
It can be reapplied to the package until the contents of same are wholly removed.

We carry in stock all sizes of these caps. Prices on application.

OLIVES

On this line we are particularly "strong," having a great variety of shapes and sizes. These styles are designed to take as few different sizes of corks and neck-bands as possible. Ask for prices.

NEW YORK STYLE OLIVES

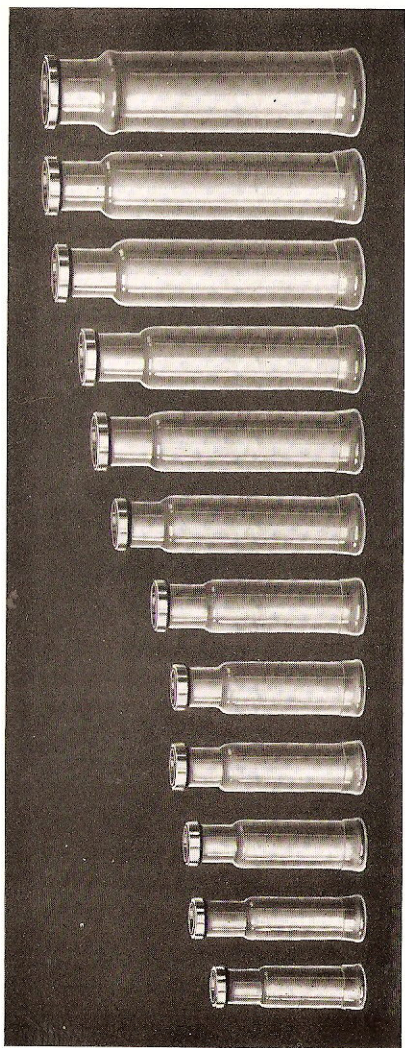


NEW YORK STYLE

Mould No.	Capacity Oz. Half Way Up Neck	Height	Diameter	Neck Label Space
322m	3 1/4	5 7/16	1 3/4	1 7/16
354m	3 1/2	6 1/4	1 5/8	1 9/16
361m	4 1/4	6 3/16	1 11/16	1 1 1/2
362m	5 1/2	6 3/16	1 7/8	1 5/8
363m	6 1/2	7 5/16	1 13/16	1 5/8
364m	7 1/2	7 7/8	1 15/16	1 9/16
360m	8 1/4	9	2	1 3/8
330m	10	9	2 1/16	1 1 1/2
365m	10 7/8	9 1/2	2 1/8	1 1 1/2
348m	12 1/4	9 7/16	2 1/4	1 1 1/2
353m	13 3/4	9 5/16	2 5/16	1 11/16
346m	15 5/8	10 3/16	2 7/16	1 11/16
366m	16 7/8	10 3/8	2 1/2	1 3/4
347m	18	10 3/4	2 1/2	1 11/16
367m	21 3/4	10 3/4	2 3/4	1 5/8
345m	28 1/2	11 5/16	2 5/16	1 5/8

These Olives are all tall and have footed bottoms.
It is the finest line of bottles for olives ever designed.
All made with flare mouth.

PERFECTION OR HULL CAP FOOTED CYLINDER OLIVES

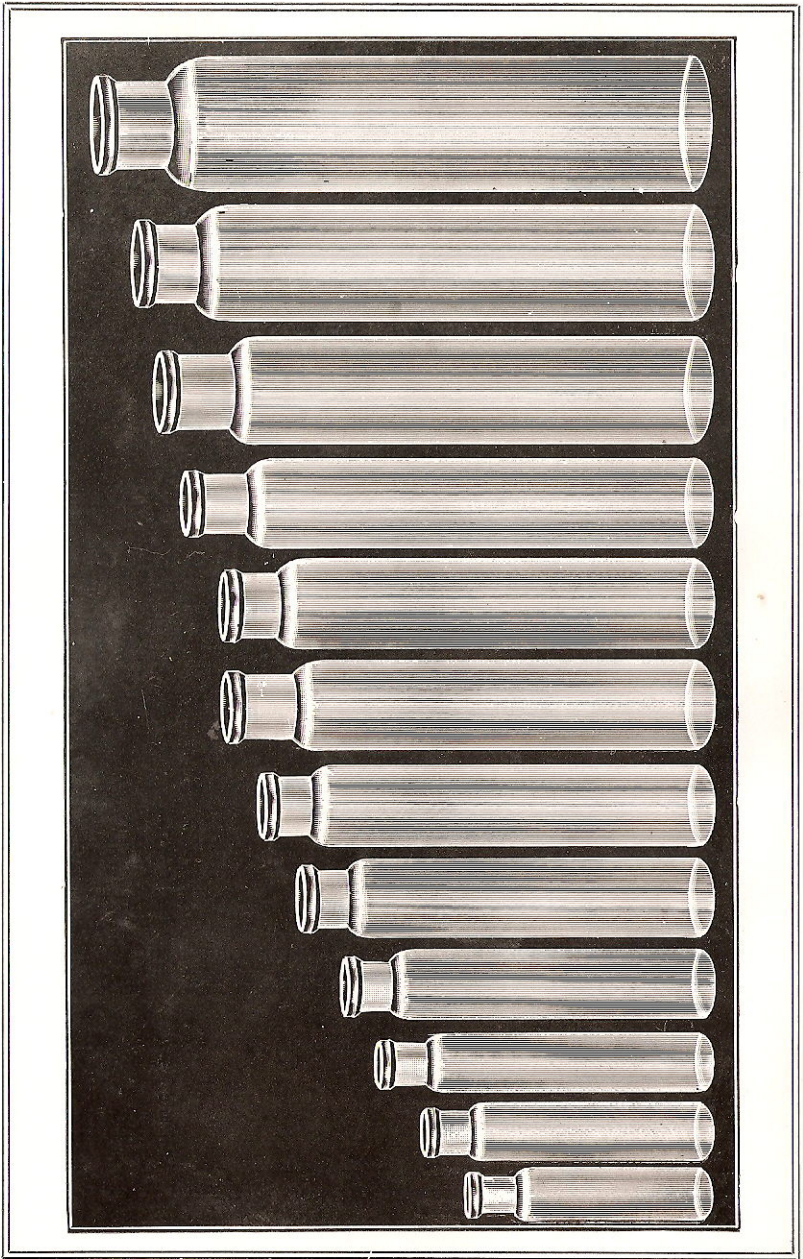


TALL FOOTED CYLINDER OLIVES

Perfection or Hull Cap Finish

Mould No.	Capacity, Oz. Half Way Up Neck	Height	Diameter	Neck Label Space
322m	3 1/4	5 7/16	1 3/4	1 7/16
354m	3 1/2	6 1/4	1 5/8	1 9/16
370m	4 1/4	6 1/2	1 3/4	1 3/16
373m	5 1/2	7	1 5/8	1 1/2
388m	7	7	2	1 3/16
371m	7 1/2	7 3/4	2	1 1/2
330m	10	8 3/4	2 1/16	1 1/4
348m	12 1/4	9 1/2	2 1/4	1 1/2
353m	13 3/4	10	2 5/16	1 1/16
358m	16	11	2 5/16	1 1/16
359m	20	11 1/2	2 1/2	1 3/4
372m	28	11 1/2	2 3/16	1 5/8

This line designed primarily for the Perfection finish; however, all sizes with exception of Nos. 358, 359 and 372, can also be finished with flare mouth.



TALL CYLINDER OLIVES

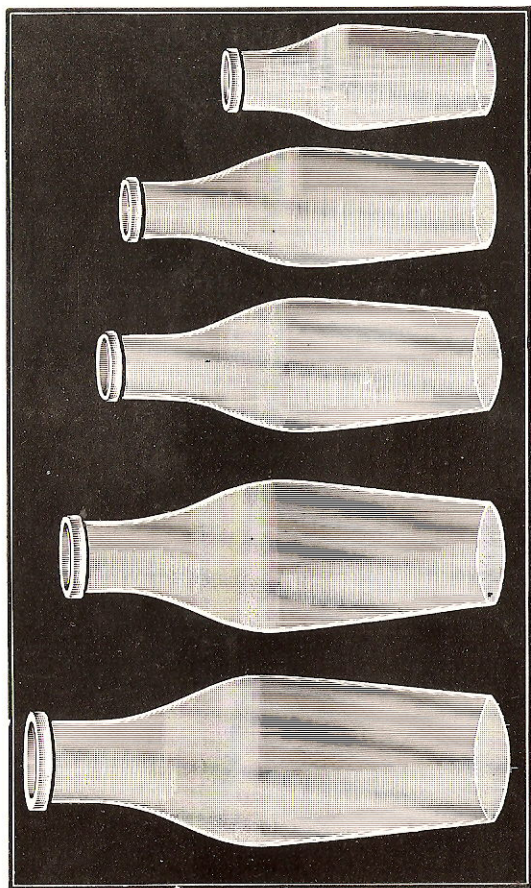
Cork Finish Only

Mould No.	Capacity Oz.	Height	Diameter	Neck Label Space
301m	4	$5\frac{1}{8}$	$1\frac{3}{4}$	$\frac{5}{16}$
302m	6	$6\frac{1}{2}$	$1\frac{15}{16}$	1
303m	8	$7\frac{9}{16}$	2	$\frac{7}{8}$
304m	10	$8\frac{1}{4}$	$2\frac{1}{8}$	$1\frac{1}{8}$
305m	12	$8\frac{11}{16}$	$2\frac{1}{4}$	$1\frac{1}{8}$
306m	14	$9\frac{3}{16}$	$2\frac{5}{16}$	$1\frac{1}{8}$

If the sizes and styles we show do not suit you, ask us for what you want.

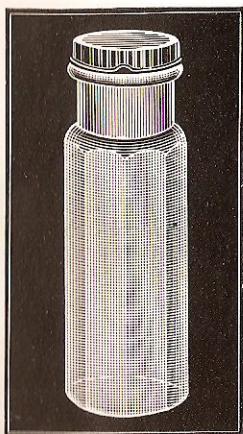
All of these bottles are good sellers, and will increase your sales if you will adopt them.

CHERRY SHAPE OLIVES

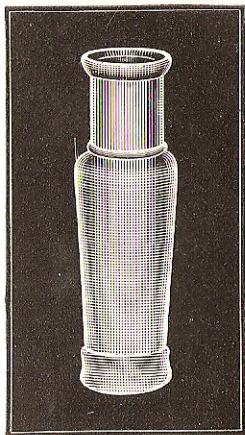


CHERRY SHAPE OLIVES**CORK FINISH ONLY**

Mould No.	Capacity Oz.
324m	5
329h	10
326h	12
328h	14
318h	16
319h	32

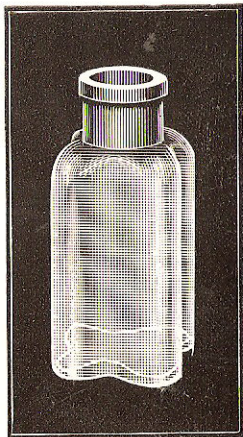
**No. 312****OCTAGON SHAPE**

Mould No.	Capacity Oz.	Finishes
311m	4	No. 38A—Cork
312m	6	No. 43A—Cork



**VARSITY SHAPE
FLARE FINISH ONLY**

Mould No.	Capacity Oz.
380m	3
381m	4
382m	5
383m	6
384m	8
385m	10
386m	12
387m	14



RIBBED CLOVERLEAF

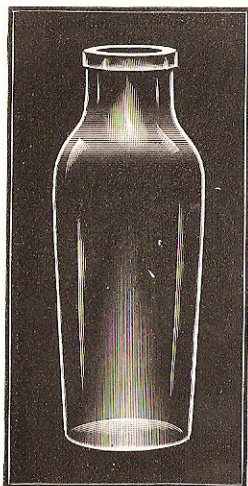
6 oz.

CORK FINISH

No. 894-H

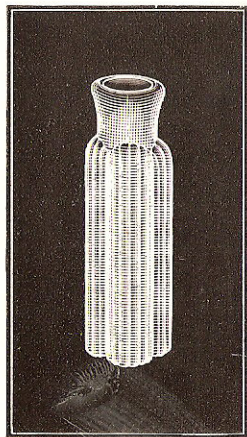
**ENGLISH STYLE
CORK FINISH ONLY**

Mould No.	Capacity Oz.
325m	6
327h	14



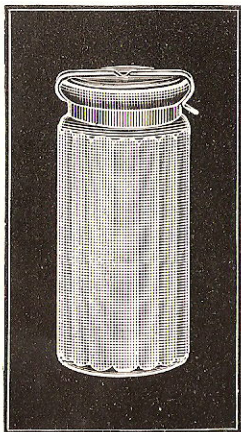
No. 327

**FLUTED
6 oz.
FLARE AND CORK FINISH**



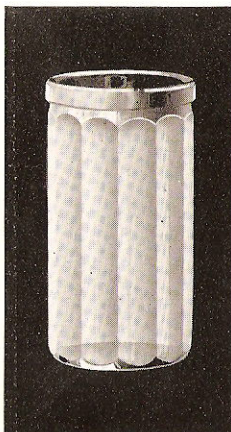
No. 376-H

CANDY JARS



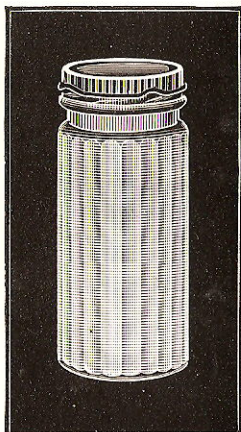
No. 181

Mould No.
181m
199m
182m
651m



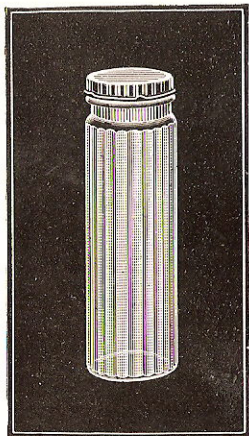
No. 651

Capacity Oz.
5 1/2
8
10
8



No. 182

Finishes
No. 2 S.T.—No. 48A
No. 53A
No. 58 S.T.—58P—53A
No. 63 Anchor

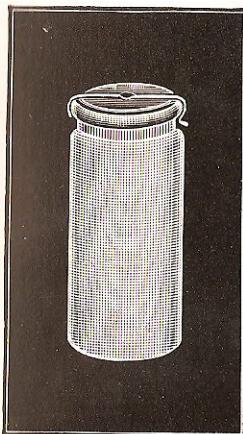


No. 198

TALL FLUTED

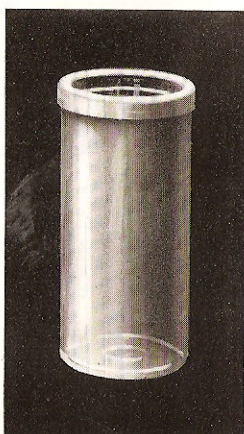
Mould No.	Capacity Oz.	Finishes
135m	4	No. 1 S.T.—No. 43Perf —No. 43A
134m	6	No. 48P—48A
198m	10	No. 53A

CANDY JARS



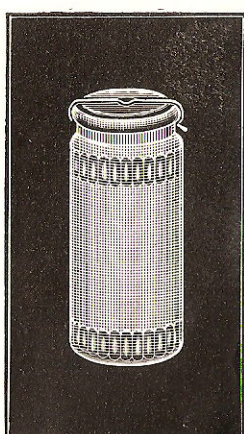
No. 180

Mould No.
645m
180m
180½m
652m



No. 652

Capacity Oz.
3
4
4
6



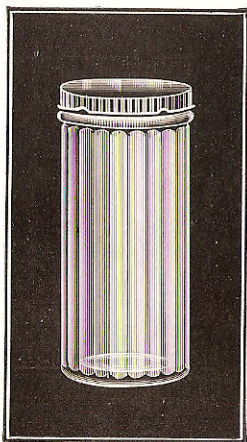
No. 180½

Finishes
Screw
No. 1 S.T.—No. 43A
No. 1 S.T.—No. 43A
No. 55 Anchor

STRAIGHT—FLUTED

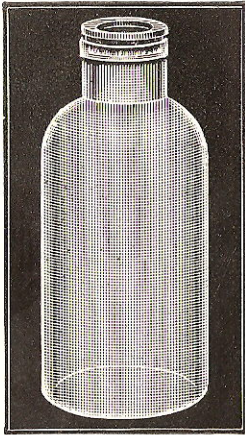
Mould No.	Capacity Oz.	Finishes
623m	4	No. 48A
613m	5½	No. 53A
133m	12	No. 63A

These jars are especially adapted to the packing of small stick candy on account of having no neck.



No. 133

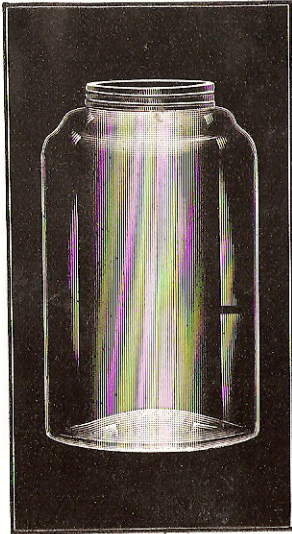
CANDY JARS



ROUND TABLET JARS

Mould No.	Capacity	Finishes
460m	4 lbs.	Glass Stopper
456m	5 lbs.	Glass Stopper

Complete with cork washer on cap to make tight fit.



LARGE WIDE MOUTH

Mould No.	Capacity	Finish
452m	1 gal.	Screw

This package is also suitable for shelled peanuts, of which it will hold five pounds.

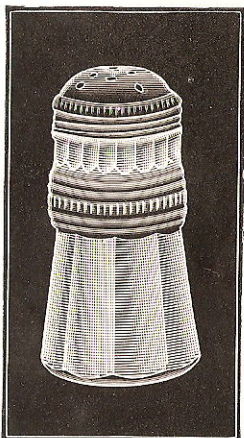
No. 452

See also Tablet Drop Stopper Jars on page 135.

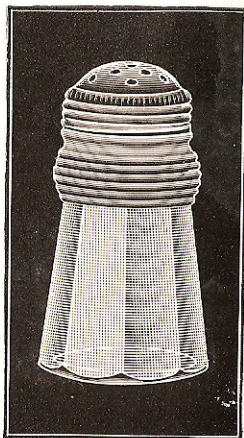
PEPPERS and SALTS
SUGAR SHAKERS

INDIVIDUAL
SERVICE JARS

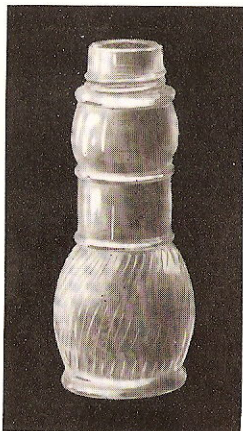
PEPPERS AND SALTS



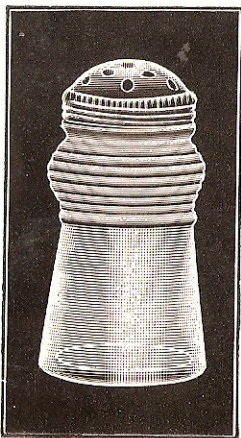
Winner
Nos. 439 and 531



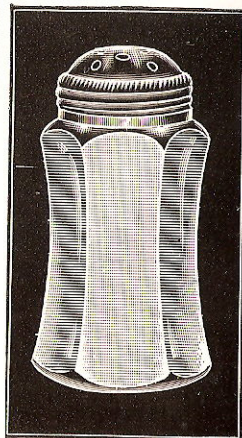
Octagon
No. 439a



Celery Salt
No. 525



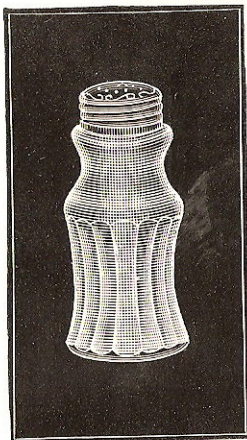
Jumbo
Nos. 416, 420, 421



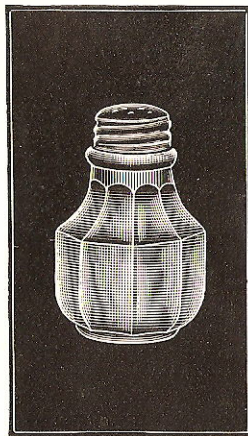
Colonial
Nos. 459, 470, 530

See page 92 for sizes and finishes.

PEPPERS AND SALTS

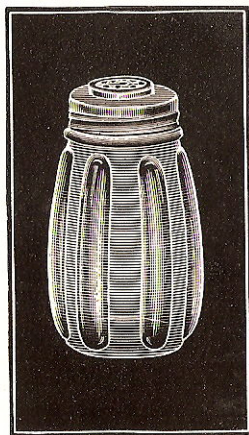


Fluted
No. 457

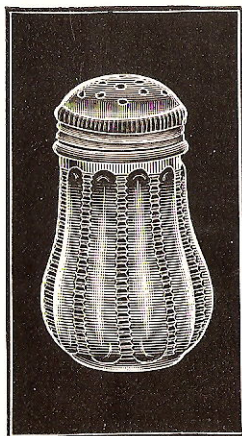


Squat Colonial
Nos. 467, 469

SUGAR SHAKERS



No. 494



No. 495

See page 92 for sizes and finishes.

CELERY SALT

Mould No.	Capacity Oz.
525m	2 1/2

PEPPERS AND SALTS

Mould No.	Capacity Oz.	Mould No.	Capacity Oz.
439m	5	457m	3
439a-m	5	469m	2
420m	6	467m	4 1/2
421m	7	470m	5
416m	7 1/2	530m	4
459m	6	531m	4

SUGAR SHAKERS

494m	5	495m	6
------	---	------	---

PEPPERS AND SALTS

479m	1 1/8	486m	2
471m	1 1/2	487m	2
478m	1 3/4	488m	2
481m	2	489m	2
482m	2	490m	2
483m	2	491m	2
484m	2	496m	2
485m	2	492m	3
		493m	3

PEPPERS AND SALTS

All Peppers and Salts shown on pages 90 and 91 can be furnished with either flat or dome caps in gold, silver or aluminum finish, or flat celluloid caps.

Sugar Shakers shown on page 91 and all Peppers and Salts shown on page 93 can be furnished with gold or silver finish tin caps, also aluminum, celluloid and combination pearl top metal caps.

All of these bottles for the packing trade are supplied with liners for caps.

No. 457 also finished for American Cap.

PEPPERS AND SALTS



487



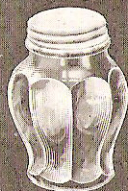
491



479



481



482



483



484



485



486



471



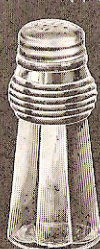
488



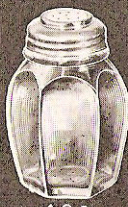
489



492



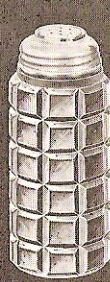
496



490



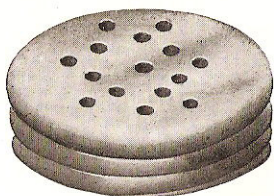
478



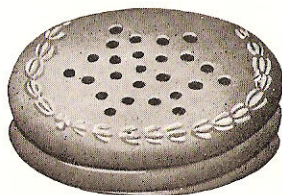
493

CAPS FOR SALT AND PEPPER SHAKERS

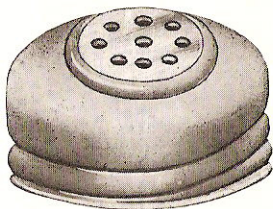
Caps shown below can be furnished in proper sizes for Salts and Peppers shown on pages 90, 91, and 93.



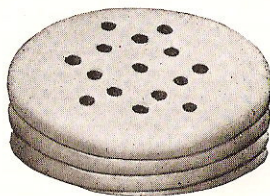
Flat Acid Aluminum



**Satin Finish
Aluminum-Wreath
Design**

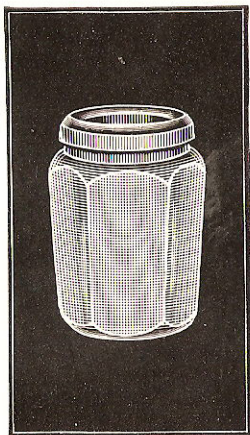


**Combination Pearl
Top**

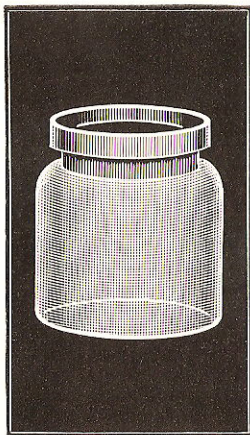


Celluloid

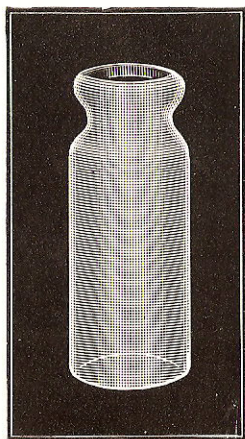
INDIVIDUAL SERVICE JARS



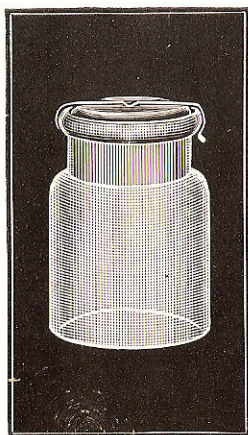
No. 120



No. 121



No. 526



No. 607

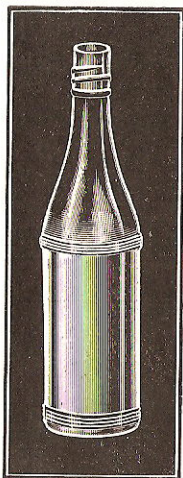
For sizes and finishes see page 96.

INDIVIDUAL SERVICE JARS

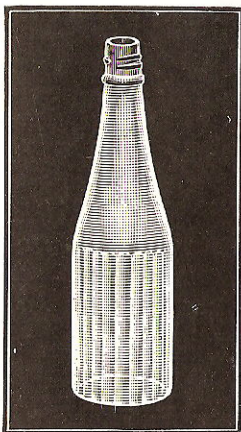
Mould No.	Capacity Oz.	Finishes
120m	3	No. 53 S.T.—53P—48 Anchor—48A
121m	3½	No. 53P
607m	3	No. 1 S.T.—48A
526m	4	Disc

Also see page 42, Mould No. 187, 2-oz. Anchor Jar, largely used for individual service.

**CATSUP, VINEGAR
GRAPE JUICE
and
SYRUP
BOTTLES**



Beaded

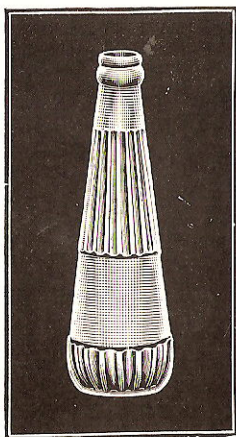


Fluted

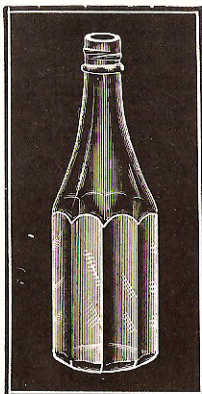


Champagne

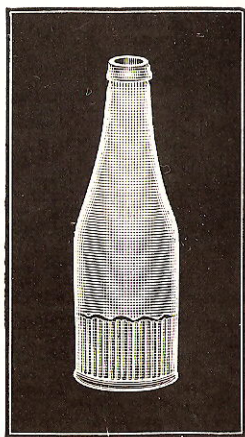
CATSUPS



Taper Ribbed



Octagon



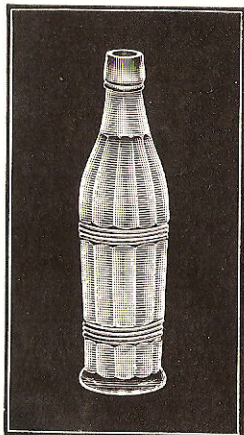
Baltimore

CATSUPS

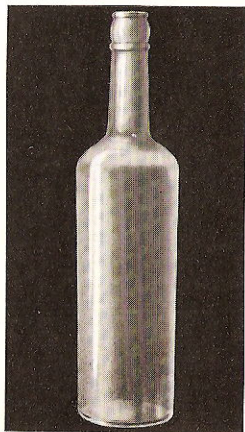
Mould No.	Capacity Oz.	Style	Finishes
200h	5	Champagne	Cork
215h	6	Champagne	Cork
201h	7	Champagne	Cork, Screw
202h	8	Champagne	Cork, Screw, Crown
205h	11	Champagne	Screw
206h	12	Champagne	Screw
213h	13	Champagne	Screw
208h	14	Champagne	Screw
210h	16	Champagne	Cork, Screw, Crown
222h	18	Champagne	Screw
211h	25	Champagne	Screw
227h	7	Octagon	Screw
231m	8	Octagon	Screw
230m	9	Octagon	Screw
225h	10	Octagon	Screw
204m	11	Octagon	Screw (No. 1 Style)
213h	11	Octagon	Screw (No. 2 Style)
232m	14	Octagon	Screw
226h	16	Octagon	Screw
219h	8	Fluted	Cork, Screw, Crown
218h	12	Fluted	Screw
220h	14	Fluted	Screw
221h	16	Fluted	Cork, Screw, Crown
223h	8	Beaded	Screw, Cork
216h	10	Beaded	Screw
224h	16	Beaded	Screw
245h	8	Baltimore	Phoenix, Crown
246h	8	Taper Ribbed	Cork, Crown, Phoenix

All machine-made Catsups can be made for various combination finishes.

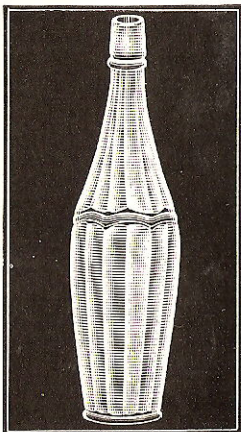
FANCY VINEGARS



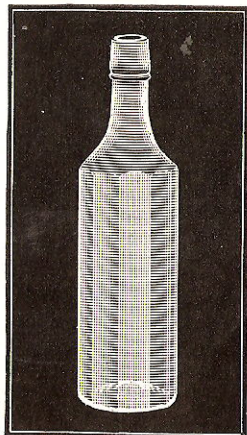
Nos. 247, 228



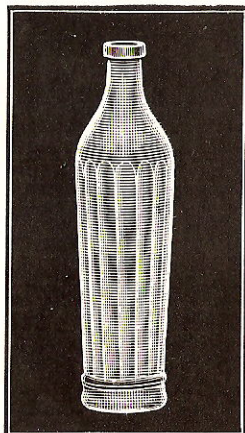
No. 523



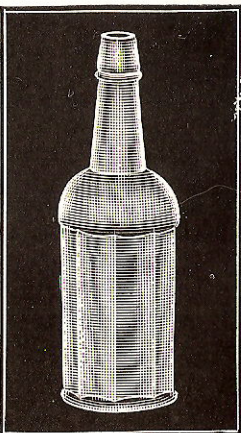
No. 235



Nos. 237, 529



No. 242, 243



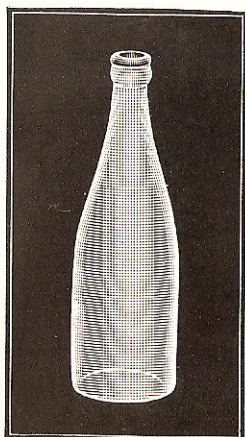
No. 234

VINEGARS

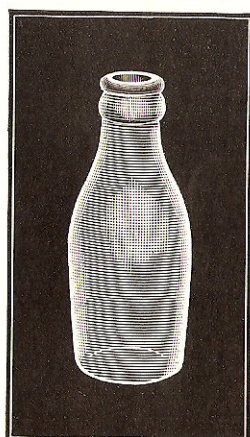
Mould No.	Capacity Oz.	Style
247h	14	Fluted
242m	16	Taper Fluted
228h	20	Fluted
529h	21	Fluted
523m	22	Round
243h	25 3/5	Taper Fluted
237h	27	Fluted
235h	28	Ten Pin Fluted
234h	32	Octagon

All with exception of Nos. 237 and 523 have Footed Bottoms.

GRAPE JUICE



Champagne

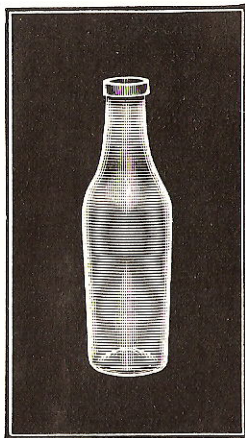


Ten Pin, No. 244

Mould No.	Capacity Oz.	Style	Finishes
214m	2	Champ.	Crown, Cork
217m	4	Champ.	Crown, Cork
700m	4	Champ., Short Style	Crown, Cork
239m	8	Champ.	Crown, Cork
248m	12	Champ.	Crown, Cork
701m	16	Champ.	Crown, Cork
249m	25	Champ.	Crown, Cork
702m	32	Champ.	Crown, Cork
233m	64	Champ.	Crown, Cork
244h	4	Ten Pin	Crown, Cork
229h	16	Ten Pin	Crown, Cork

Grape Juice Bottles are made with interchangeable tops and can be supplied with proper finish for various closures.

SYRUP AND SAUCE BOTTLES

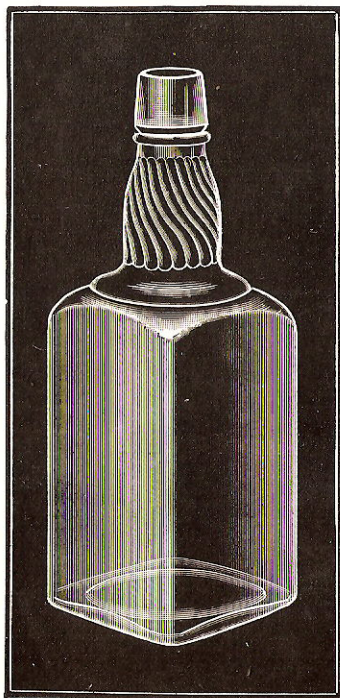


ROUND SYRUP

Mould No.	Capacity Oz.
415h	6
413h	13

SQUARE FANCY
SYRUP

Mould No.	Capacity Oz.
418h	2
414h	6
409h	16
417h	25 $\frac{3}{5}$
410h	32

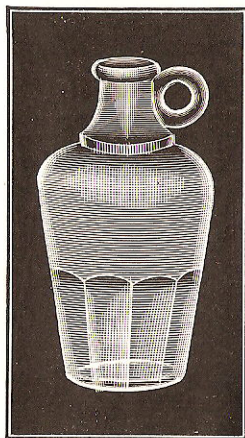


SYRUP AND SAUCE BOTTLES

FANCY JUG SHAPE

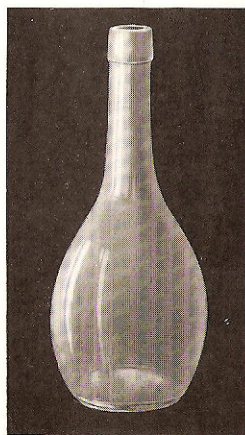
Mould No.	Capacity Oz.	Finishes
401m	4	Cork
402m	12	Cork
403m	16	Cork

Furnished with or without glass drop stoppers.



DECANTER STYLE

Mould No.	Capacity Oz.	Finish
272h	12	Cork



Third. If any valuable constituent of the article has been wholly or in part abstracted.

Fourth. If it be mixed, colored, powdered, coated, or stained in a manner whereby damage or inferiority is concealed.

Fifth. If it contain any added poisonous or other added deleterious ingredient which may render such article injurious to health; *Provided*, That when in the preparation of food products for shipment they are preserved by any external application applied in such manner that the preservative is necessarily removed mechanically, or by maceration in water, or otherwise, and directions for the removal of said preservative shall be printed on the covering or the package, the provisions of this Act shall be construed as applying only when said products are ready for consumption.

Sixth. If it consists in whole or in part of a filthy, decomposed, or putrid animal or vegetable substance, or any portion of an animal unfit for food, whether manufactured or not, or if it is the product of a diseased animal, or one that has died otherwise than by slaughter.

SEC. 8. That the term "misbranded," as used herein, shall apply to all drugs or articles of food, or articles which enter into the composition of food, the package or label of which shall bear any statement, design, or device regarding such article, or the ingredients or substances contained therein which shall be false or misleading in any particular, and to any food or drug product which is falsely branded as to the State, Territory, or country in which it is manufactured or produced.

That for the purposes of this Act an article shall also be deemed to be misbranded:

In the case of food:

First. If it be an imitation of or offered for sale under the distinctive name of another article.

Second. If it be labeled or branded so as to deceive or mislead the purchaser, or purport to be a foreign product when not so, or if the contents of the package as originally put up shall have been removed in whole or in part and other contents shall have been placed in such package, or if it fail to bear a statement on the label of the quantity or proportion of any morphine, opium, cocaine, heroin, alpha or beta eucaine, chloroform, cannabis indica, chloral hydrate, or acetanilide, or any derivative or preparation of any of such substances contained therein.

Third.* If in package form, the quantity of the contents be not plainly and conspicuously marked on the outside of the package in terms of weight, measure, or numerical count; *Provided, however*, That reasonable variations shall be permitted, and tolerances and also exemptions as to small packages shall be established by rules and regulations made in accordance with the provisions of section three of this act.

Fourth. If the package containing it or its label shall bear any statement, design, or device regarding the ingredients or the substances contained therein, which statement, design, or device shall be false or misleading in any particular; *Provided*, That an article of food which does not contain any added poisonous or deleterious ingredients shall not be deemed to be adulterated or misbranded in the following cases:

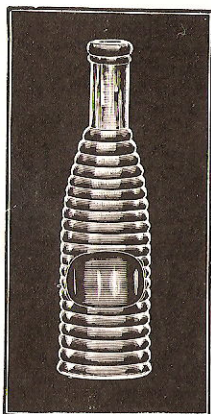
First. In the case of mixtures or compounds which may be now or from time to time hereafter known as articles of food, under their own distinctive names and not an imitation of or offered for sale under the distinctive name of another article, if the name be accompanied on the same label or brand with a statement of the place where said article has been manufactured or produced.

Second. In case of articles labeled, branded, or tagged so as to plainly indicate that they are compounds, imitations, or blends, and the word "compound," "imitation," or "blend," as the case may be, is plainly stated on the package in which it is offered for sale; *Provided*, That the term blend as used herein shall be construed to mean a mixture of like substances, not excluding harmless coloring or flavoring ingredients used for the purpose of coloring and flavoring only; *And provided further*, That nothing in this Act shall be construed as requiring or compelling proprietors or manufacturers of proprietary foods which contain no unwholesome added ingredient to disclose their trade formulas, except in so far as the provisions of this act may require to secure freedom from adulteration or misbranding.

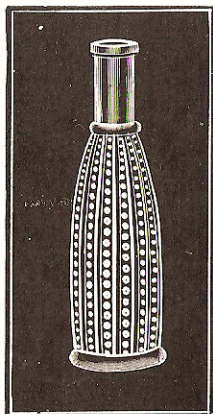
*The Act of March 3, 1913, provides that no penalty of fine, imprisonment, or confiscation shall be enforced for any violation of its provisions as to domestic products prepared or foreign products imported prior to eighteen months after its passage.

PEPPER SAUCE
SALAD DRESSING
CHILI SAUCE
and
OLIVE OIL
BOTTLES

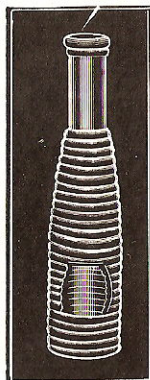
PEPPER SAUCE



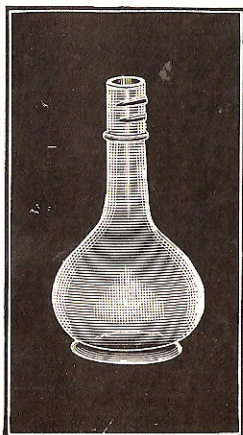
Nos. 253, 259
Oval Ring



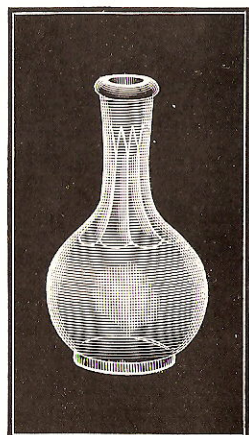
No. 258
Polka-dot



Nos. 250, 251
Ring



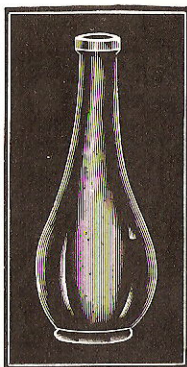
No. 278
Tamazula



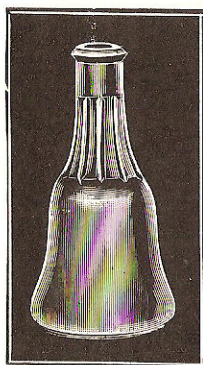
No. 263
Decanter

See page 109 for sizes and styles.

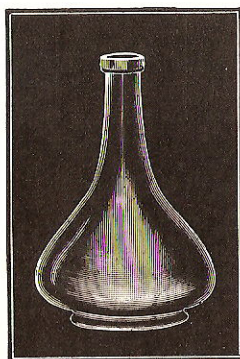
PEPPER SAUCE



No. 252
Piasa



Nos. 255, 262
Bell



No. 256
Tamazula



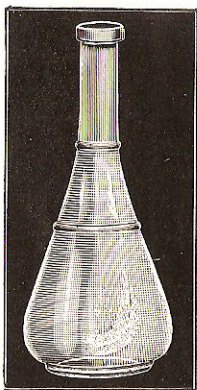
Nos. 260, 261
Worcestershire



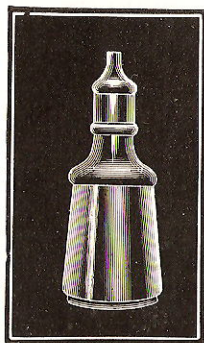
No. 613
Gothic

See page 109 for sizes and styles.

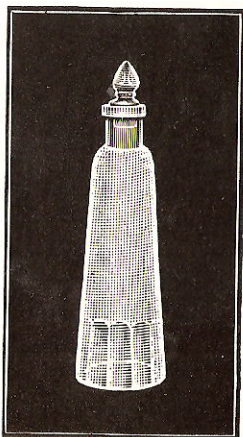
PEPPER SAUCE



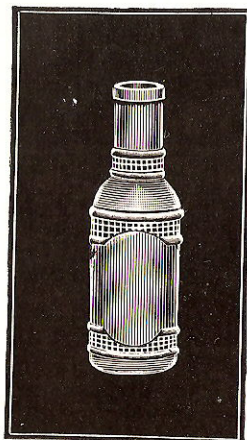
No. 254
Mexican



Nos. 257, 1069
Squat



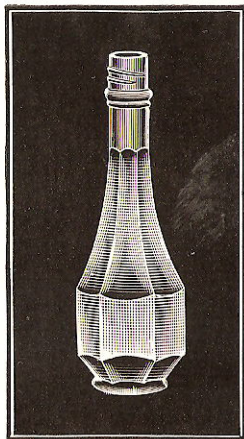
No. 472
Taper



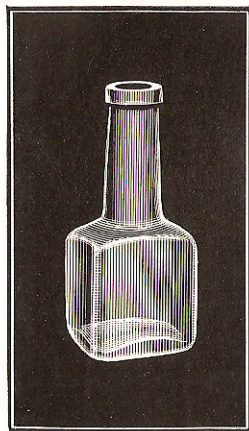
No. 464
Tabasco

See page 109 for sizes and styles.

PEPPER SAUCE



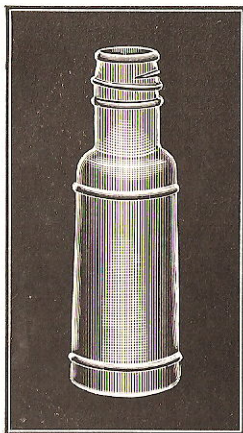
No. 273
Colonial



No. 275
Square

Mould No.	Capacity Oz.	Style	Finishes
253h	3	Oval Ring	Cork
259h	5	Oval Ring	Cork
250h	4	Ring	Cork
251h	6	Ring	Cork
258h	6	Polka-dot	Cork
252h	6	Piasa	Cork and Screw
273h	6	Colonial	Screw
613h	4	Gothic	Cork
262h	5	Bell	Cork
255h	10	Bell	Cork
278h	4	Tamazula	Screw
256h	9	Tamazula	Cork
254h	8	Mexican	Cork
472h	3	Taper	Gls. Stpr. and Shell Cork
263h	12	Decanter	Cork
275h	8	Sq. Decanter	Cork
257h	7	Squat	Cork
1069h	5	Squat	Cork
260h	6	Worcestershire	Gls. Stpr. and Shell Cork
261h	12	Worcestershire	Gls. Stpr. and Shell Cork
464h	2	Tabasco Sauce	Cork

SALAD DRESSING
CHILI SAUCE



Round

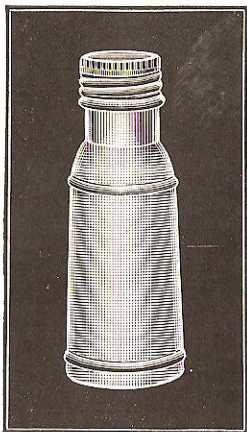


Oval

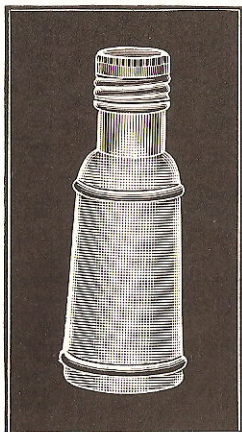
Mould No.	Capacity Oz.	Finishes
288	8	Crown and Screw
289	16	Crown and Screw
290	4½	Crown and Screw
291	11	Crown and Screw

All machine-made Chili Sauce and Salad Dressing Bottles can be made for various finishes.

SALAD DRESSING
CHILI SAUCE



No. 1 Style



No. 2 Style

Mould No.	Capacity Oz.	Style	Finishes
276m	8	No. 1	Screw
277m	16	No. 1	Screw
280m	8	No. 2	Screw
281m	16	No. 2	Screw

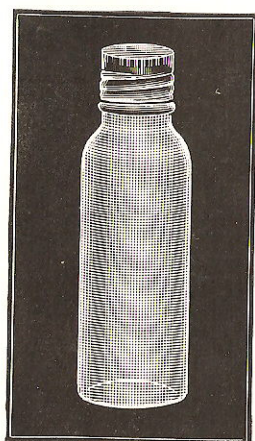
These shapes are adapted equally well for salad dressing and chili sauce.



No. 274

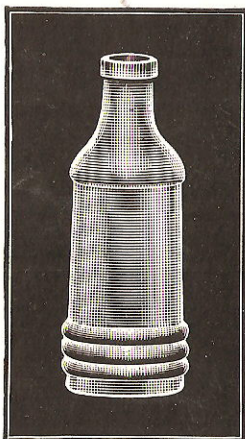
Mould No.	Capacity Oz.
274h	3 1/4
285m	9
283h	3 1/2
284h	10
286m	8
287m	16

SALAD
DRESSING

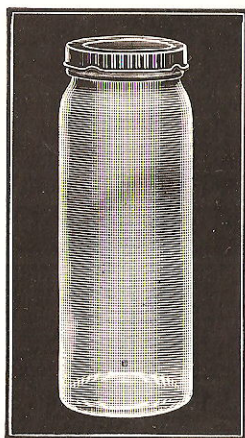


No. 285

Style	Finishes
Beaded	Screw
Round	Screw
Oval	Cork
Oval	Cork
Round	48 Amer.
Round	48 Amer.

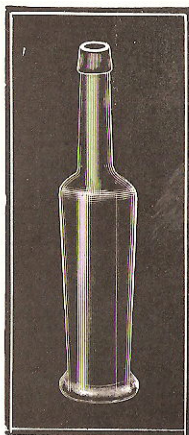


No. 284

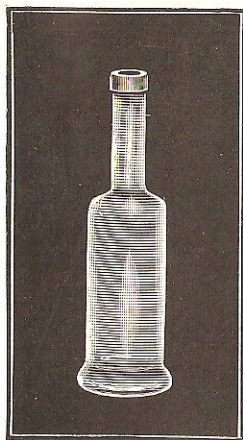


No. 286

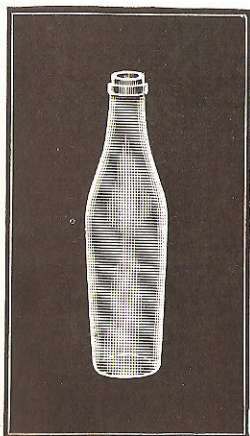
OLIVE OILS



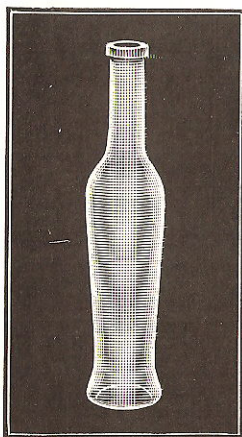
Bell Bottom



**Imported
Bell Bottom**



Imported Shape



No. 2 Style

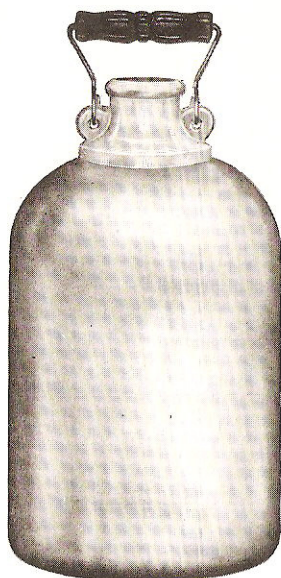
See page 114 for sizes and styles.

OLIVE OILS

Mould No.	Style	Capacity Oz.
342h	Bell Bottom	2
339h	Bell Bottom	2 $\frac{1}{4}$
331h	Bell Bottom	2 $\frac{1}{2}$
332h	Bell Bottom	3 $\frac{1}{2}$
333h	Bell Bottom	4
340h	Bell Bottom	5
334h	Bell Bottom	6
344h	Bell Bottom	8
346h	Bell Bottom	10
337h	Bell Bottom	12
338h	Bell Bottom	16
341h	Imported, Bell Bottom	4 $\frac{1}{2}$
313h	No. 2 Style	2 $\frac{1}{8}$
314h	No. 2 Style	4
315h	No. 2 Style	8
355h	Imported	4
356h	Imported	6
357h	Imported	12
343h	Imported	24

**MACHINE MADE
PACKERS
or
GLASS JUGS**

MACHINE PACKERS OR GLASS JUGS



Style No. 2



Style No. 1



Style No. 3

MACHINE PACKERS OR GLASS JUGS

These Packers are made in various finishes as shown below:

Finishes

Capacity Oz.	No. 1 Style	No. 2 Style	No. 3 Style
25 3/5	Cork	Cork	Cork
32	Cork	Cork-No. 2 Kork-N-Seal	Cork
62	Cork	Cork	Cork
64	Cork	Cork-No. 2 Kork-N-Seal	Cork No. 2 Kork-N-Seal
124	Cork	Cork	Cork
128	Cork-42 m-m. Goldy	Cork-No. 2 Kork-N-Seal-42 m-m. Goldy	Cork-No. 2 Kork-N-Seal
132	Cork	Cork	Cork
256	Not made	Cork	Not made

64 & 128 Oz. No. 2 Style also made 36 m-m. Goldy Finish

MACHINE PACKERS OR GLASS JUGS WITH SCREW CAP



MACHINE PACKERS OR GLASS JUGS

With Screw Cap

No. 2 Style Only

Capacity Oz.

32

64

128

We can furnish screw caps with these Packers, with pulp and oil liners, or felt and oil liners.

Can be supplied with any kind of screw cap.

MACHINE PACKERS OR GLASS JUGS



Style No. 2
With American Cap

Style No. 2
With Kork-N-Seal
Cap

Style No. 2
With Spring Top
Closure

In Half-Gallon size can be finished for No. 43 American Cap.

In Gallon size can be finished for Nos. 43, 48 and 58 American Cap and No. 63 Spring Top.

These finishes are made in the No. 2 Style Packer only.

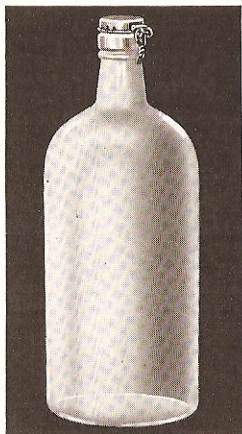
See page 117 for Kork-N-Seal Finish Packers.

TALL PACKERS



Mould No.	Capacity Oz.	Finishes
328h	4	Cork
139h	8	Cork
449h	16	Cork

Mould No.	Capacity Oz.	Finishes
572m	18	Cork-Kork-N-Seal
502m	20	Cork-Kork-N-Seal



Mould No.	Capacity Oz.	Finish
528m	32	Kork-N-Seal

This cut shows Kork-N-Seal finish with cap attached.

SEC. 9. That no dealer shall be prosecuted under the provisions of this Act when he can establish a guaranty signed by the wholesaler, jobber, manufacturer, or other party residing in the United States, from whom he purchases such articles, to the effect that the same is not adulterated or misbranded within the meaning of this Act, designating it.

SEC. 10 provides the methods of prosecuting offenders and destroying goods imported or offered for import which are falsely labeled or adulterated.

SEC. 11 provides for the examination of samples of foods and drugs which are being imported into the United States and offered for import.

SEC. 12 provides that the term "Territory" as used in this Act shall include the insular possessions of the United States. The word "person" as used in this Act shall be construed to import both the plural and the singular, as the case demands, and shall include corporations, companies, societies and associations.

THE NET WEIGHT LAW

The so-called net weight law compels manufacturers to make a clear statement of the weight, volume or contents of their packages of food. Regulations for carrying out this law have been drawn up by the Treasury, Agriculture and Commerce Departments. These regulations apply to foods shipped in interstate commerce or sold in the District of Columbia or the territories.

The regulations in general require that the manufacturers of foods shall plainly mark all packages, bottles or other containers holding more than two ounces avoirdupois, or more than one fluid ounce, to show the net weight or volume of the contents.

The measure must be stated in avoirdupois pounds and ounces, United States gallons, quarts, pints or fluid ounces, United States standard bushels, half bushels, pecks, quarts, pints or half pints. The contents by a like method may be expressed in terms of metric weight or measure. The volume of liquids must be computed at 58 degrees Fahrenheit.

The quantity stated on the container must represent the actual quantity of food exclusive of wrappings and container.

In general, solids must be stated in terms of weight and liquids in terms of volume except where there is a definite trade custom; otherwise any marking of the packing, in terms that are generally understood to express definite quantities, will be permitted.

The quantity of viscous or semi-solid food or of mixtures of solids and liquids may be stated either by weight or measure, but the statement must clearly indicate whether the quantity is expressed in terms of weight or measure.

In the case of certain articles the contents may be stated by numerical count, provided such numerical count gives accurate information as to the quantity of food in the package. Under this requirement it would not be enough to state that a package of candy contained 24 cream peppermints, as candies vary in size, and this would not be a statement of the actual quantity of candy in the package.

The regulations also permit the statement of minimum volume or weight as: "minimum weight 12 ounces." No variations below the stated minimum quantity will be permitted.

The statement of weight or measure must be marked in terms of the largest unit contained in the package; for example, if the package contains a pound and a fraction, the contents must be expressed in terms of pounds and fractions thereof, or pounds and ounces, and not merely in ounces.

In the packing and bottling of many foods it would be impossible or else add unnecessarily to cost for the manufacturer to place an absolutely accurate statement of the amount of the food in every package and for this reason the regulations permit tolerances or variations in packages where the discrepancies are due exclusively to unavoidable errors in weighing, measuring or counting which occur in packing conducted in compliance with good commercial practice.

This tolerance is allowed in order to permit the use of weighing and measuring machines which, like human operators cannot weigh or measure with absolute accuracy every package. The regulations, however, provide that a run of such packages must show as many cases overweight and as much excess as it does cases of underweight or undervolume.

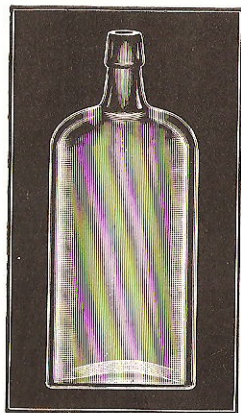
Similarly in the case of bottles which cannot be blown with absolute accuracy, tolerances are allowed, but with the same proviso that the run of bottles must show as much excess in volume as deficiency in volume. Queer shaped bottles must not show greater discrepancies than standard round or square bottles of the same capacity. This means that a manufacturer who uses some special bottle of odd shape cannot claim a greater variation because of the difficulty of blowing or manufacturing such a bottle or container.

AMMONIAS
EXTRACTS
and
MISCELLANEOUS
WARE

AMMONIAS



No. 1 Style



No. 2 Style

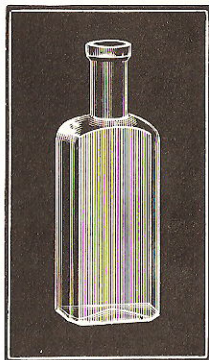
Mould No.	Style	Capacity Oz.
437	No. 1 Style	3
438	No. 1 Style	4
504R	No. 1 Style	6
340R	No. 1 Style	8
937R	No. 1 Style	10
406	No. 1 Style	12
427m	No. 2 Style	12
398R	No. 1 Style	14
408	No. 1 Style	16
557R	No. 1 Style	32

BLUING BOTTLES

Nos. 437, 438, 504R and 340R are also used frequently for Bluing.

See also No. 407m on page 133.

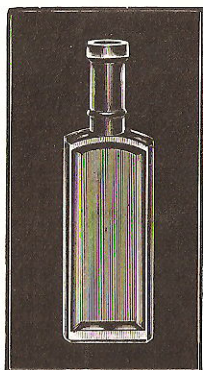
PANELS AND EXTRACTS



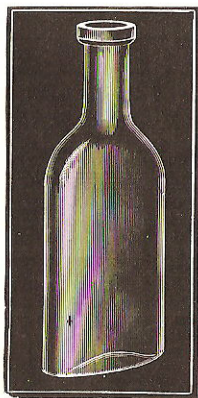
Flat Extract



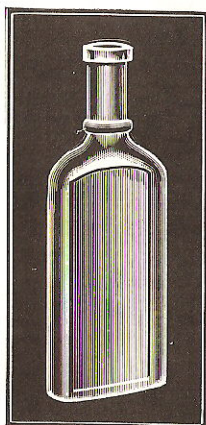
Obert Panel



Tall $\frac{3}{4}$ Panel



Plain Oval Extract



Obert Panel, Tall

See page 127 for sizes.

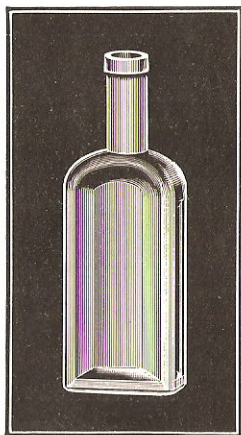
PANELS AND EXTRACTS



Mammoth or
R. S. B. N. Panel



Argyle Panel



Full Measure or
Price Panel



S. S. B. N. Panel



Hart Panel

See page 127 for sizes.

PANELS AND EXTRACTS

Mould No.	Capacity Oz.	Style	Packed Gross Box
655R	1	T. and T. Flats	5
679R	1½	T. and T. Flats	3
1118R	2	T. and T. Flats	3
1045R	4	T. and T. Flats	1
38R	8	T. and T. Flats	1
905R	1	¾ Panel	3
196R	1¼	Obert	3
200R	2	Obert	3
205R	¾	Tall Obert	5
1091R	1½	Tall Obert	3
203R	2	Tall Obert	3
362R	2	Plain Oval	3
371R	¾	R. S. B. N.	5
491R	1	R. S. B. N.	5
882R	1¼	R. S. B. N.	3
897R	1½	R. S. B. N.	3
592R	2	R. S. B. N.	3
687R	2½	R. S. B. N.	2
790R	3	R. S. B. N.	2
496R	4	R. S. B. N.	1
641R	6	R. S. B. N.	1
696R	8	R. S. B. N.	1
78R	¾	S. S. B. N.	5
195R	1	S. S. B. N.	5
690R	1¼	S. S. B. N.	3
668R	2	S. S. B. N.	3
336R	2½	S. S. B. N.	2
677R	4	S. S. B. N.	1
649R	6	S. S. B. N.	1
	7	S. S. B. N.	1
	8	S. S. B. N.	1
661R	8	S. S. B. N.	1
1094R	1	Argyle	3
1112R	1¼	Argyle	3
691R	1½	Argyle	3
152R	2	Argyle	3
1054R	2½	Jumbo Argyle	2
895R	1	Full Measure	5
1034R	2	Full Measure	3
1033R	4	Full Measure	1
972R	8	Full Measure	1
971R	16	Full Measure	1½
118R	2	Hart	3
120R	4	Hart	1
112R	8	Hart	1

SEWING MACHINE OILS



Mould No.

370R

355R

334R

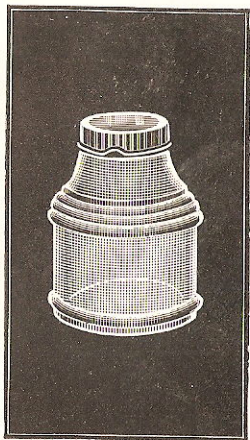
Capacity

1½ oz.

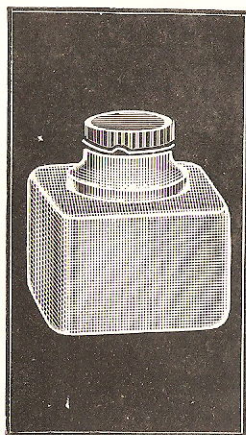
2 oz.

2½ oz.

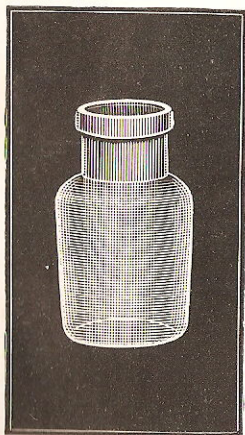
INKS



No. 508
2-oz. Ink
American Finish



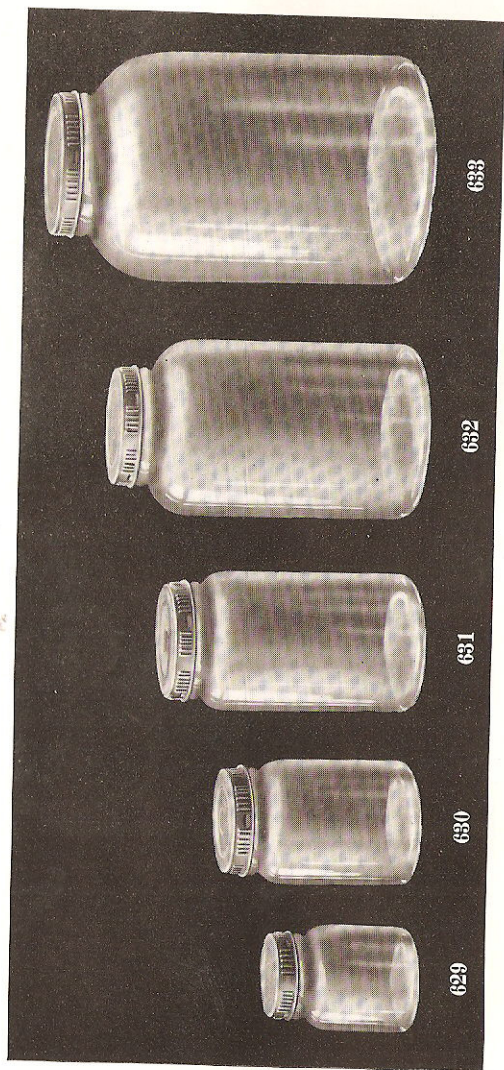
No. 509
4-oz. Square Ink
American Finish



No. 513
Pomade

2-OUNCE POMADE
Cork Finish

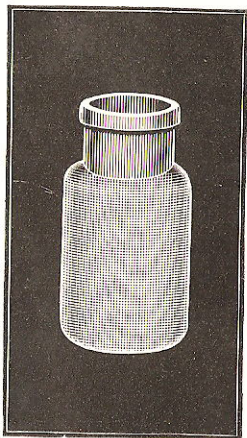
SHELLAC OR VARNISH JARS



SHELLAC OR VARNISH JARS

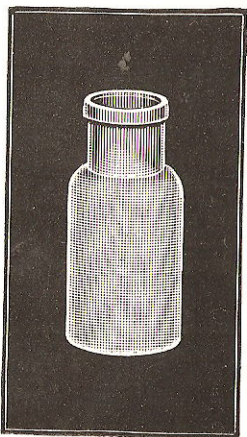
Mould No.	Capacity Oz.	Finishes
629m	2	No. 38 Reseal or American
630m	4	No. 48 Reseal or American
631m	8	No. 53 Reseal or American
632m	16	No. 53 Reseal or American
633m	32	No. 63 Reseal or American

Anchor Jars shown on page 42 are also well adapted for shellac and varnish. (See also page 136.)



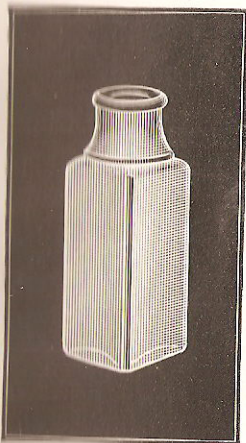
ROUND SHOE POLISH

Mould No.	Capacity Oz.	Finishes
514m	2	Cork
555m	3 1/2	Cork
515m	4	Cork



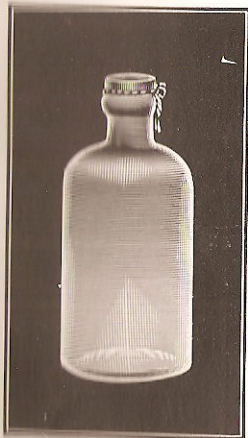
QUININE

Mould No.	Capacity Oz.	Finishes
465m	1/8	Cork
466m	1/4	Cork



SQUARE POLISH

Mould No.	Capacity Oz.	Finishes
468m	4	Cork
556m	3 ½	Cork



ROUND BLUING

Mould No.	Capacity Oz.	Finishes
407m	10	Cork or Kork-N-Seal

No. 407

MASSAGE CREAM



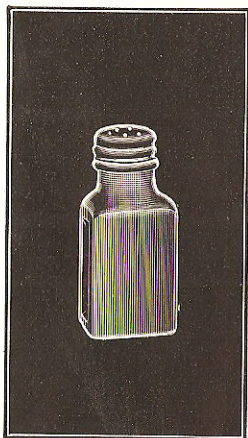
Mould No.
No. 504m

Capacity
14 oz.

Finish
Screw

Furnished with or without Lacquered Tin or Aluminum Screw Cap.

CHILI POWDER



Mould No.
No. 646m

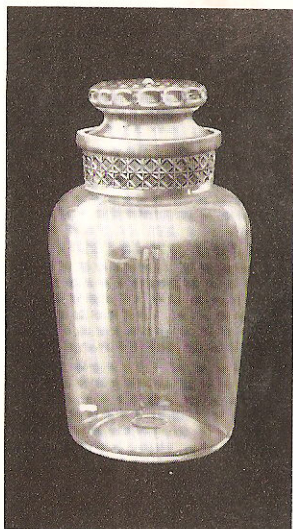
Capacity
1½ oz.

Finish
Screw

TABLET JARS

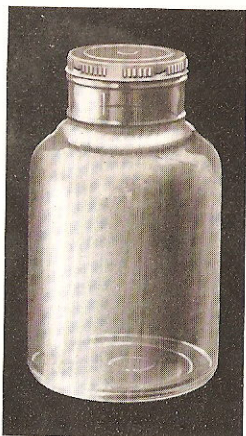


Square



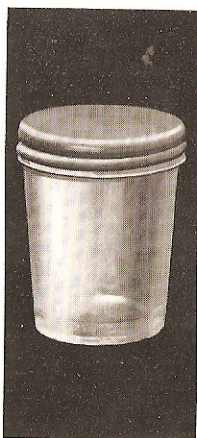
Round Taper

Mould No.	Capacity	Style	Finishes
661m	1½ lb.	Square	Drop Stopper
656m	2½ lb.	Round Taper	Drop Stopper
654m	2½ lb.	Square	Drop Stopper
657m	5 lb.	Round Taper	Drop Stopper
655m	5 lb.	Square	Drop Stopper



SHELLAC AND VARNISH JARS

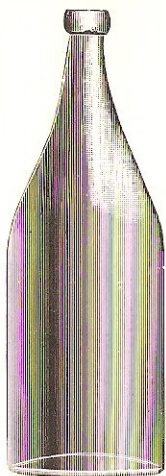
Mould No.	Capacity Oz.	Finishes
658m	8	No. 53 Reseal or Amer.
659m	16	No. 53 Reseal or Amer.
660m	32	No. 63 Reseal or Amer.



CHEESE JAR

Mould No.	Capacity Oz.	Finish
662m	3	Screw

APOLLINARIS SHAPE WATER BOTTLE



Mould No.

Capacity

233m

 $\frac{1}{2}$ Gallon

Can be finished either for cork or lightning stopper. Plate mould.

DIMENSIONS OF BOTTLES AND JARS NOT OTHERWISE SHOWN.

Mould No.	Height	Diameter	Neck Label Space
1	7	$1\frac{3}{4}$	1
2	8	$1\frac{15}{16}$	$1\frac{1}{2}$
3	9	$2\frac{1}{8}$	$1\frac{1}{8}$
4	$9\frac{1}{2}$	$2\frac{1}{8}$	$1\frac{1}{4}$
6	$11\frac{3}{8}$	$2\frac{5}{8}$	$1\frac{9}{16}$
7	$7\frac{3}{8}$	$1\frac{3}{4}$	$1\frac{1}{8}$
8	$7\frac{3}{4}$	$1\frac{15}{16}$	$1\frac{1}{4}$
11	$9\frac{15}{16}$	$2\frac{1}{2}$	$1\frac{1}{8}$
12	$11\frac{1}{4}$	$2\frac{9}{16}$	$1\frac{1}{8}$
13	$7\frac{13}{16}$	$1\frac{7}{8}$	$1\frac{1}{4}$
14	$9\frac{1}{8}$	$2\frac{1}{4}$	$1\frac{1}{8}$
15	$7\frac{3}{4}$	$2\frac{5}{16}$	1
16	$5\frac{7}{16}$	$1\frac{7}{8}$	$1\frac{3}{16}$
17	$5\frac{1}{2}$	$2\frac{5}{16}$	$\frac{13}{16}$
19	$7\frac{7}{8}$	$2\frac{1}{4}$	$1\frac{3}{8}$

Mould No.	Height	Diameter	Neck Label Space
21	10 1/16	2 3/4	1 5/16
24	7 11/16	2 1/16	1 1/8
25	7 1/2	1 7/8	1 3/8
27	7 3/4	2 3/16	1 7/8
29	6 9/16	1 3/4	1 7/8
30	7 7/16	2 9/16	1 1/16
31	6 1/2	2 5/16	1
32	7 13/16	2 3/16	1
37	7 1/4	2 11/16	1
38	11 3/16	2 9/16	1 3/16
43	7 1/16	2 3/16	1 7/8
44	7 3/8	2 7/8	3 3/4
45	7 7/8	3 1/8	7/8
46	8	3 7/8	1
48	8 1/4	4 1/8	1 1/4
49	5 5/16	1 3/8	1 5/8
50	5 1/2	1 1/2	5/8
51	6	1 1/2	7/8
52	6 3/16	1 11/16	15/16
55	9 7/16	1 3/4	1 3/8
56	5 3/16	4 5/16	1 5/8
62	5 3/16	1 5/16	3/4
78	12 1/4	5 5/8	1 1/8
80	6 7/8	1 1/8	1 9/16
83	6 7/16	1 15/16	1
85	8	2 1/2	15/16
86	9 1/8	2 3/4	1 1/16
87	7 1/4	2 1/4	1 1/8
89	7 1/4	2 1/4	1
90	7 1/2	1 1/16	1
91	6 3/8	1 15/16	1 15/16
92	6 5/16	1 9/16	1
93	7 3/4	1 7/8	1 1/16
94	8 7/8	1 15/16	1 1/4
95	7 1/16	1 3/4	3/4
96	7 3/16	2 1/16	15/16
98	7 3/8	2 1/8	1 1/16
99	6 1/2	1 7/8	1 13/16
100	7	1 5/8	1 1/16
104	5 1/8	2 5/8	1 1/8
116	6	2 9/16	1 5/8
117	4 7/8	2 5/16	1
118	4 1/4	2 7/8	3/4
120	3	1 15/16	None
121	2 5/8	2 3/8	None
123	5 7/16	2 7/8	15/16
125	4 1/2	3 3/4	9/16
127	4 1/2	3 7/16	7/8
128	5	2 9/16	None
129	4 3/8	1 1/8	9/16
130	5 1/4	1 7/8	9/16
131	6 3/4	2 3/4	11/16
132	8 3/4	2 1/16	11/16

Mould No.	Height	Diameter	Neck Label Space
133	$7\frac{5}{8}$	$2\frac{3}{8}$	None
134	$6\frac{3}{16}$	$1\frac{13}{16}$...
135	$4\frac{1}{2}$	$1\frac{13}{16}$	$\frac{3}{16}$
137	$5\frac{1}{4}$	$2\frac{1}{16}$	1
138	$5\frac{3}{4}$	$2\frac{5}{8}$	$1\frac{3}{16}$
139	$5\frac{9}{16}$	$2\frac{9}{16}$	$\frac{13}{16}$
140	$4\frac{5}{8}$	$2\frac{3}{4}$	$\frac{7}{8}$
141	$5\frac{1}{2}$	$2\frac{15}{16}$	$\frac{15}{16}$
142	$4\frac{5}{8}$	$2\frac{1}{2}$	$\frac{15}{16}$
146	$4\frac{7}{8}$	$2\frac{9}{16}$	None
155	$5\frac{3}{8}$	$3\frac{3}{4}$	1
156	$6\frac{13}{16}$	$2\frac{13}{16}$	$\frac{5}{16}$
157	$4\frac{9}{16}$	$2\frac{1}{2}$	$\frac{13}{16}$
158	$4\frac{1}{2}$	$2\frac{5}{8}$	$\frac{11}{16}$
160	$5\frac{1}{16}$	$3\frac{1}{4}$	$\frac{9}{16}$
161	$7\frac{1}{4}$	$2\frac{13}{16}$	None
163	$6\frac{15}{16}$	3	...
164	$4\frac{7}{8}$	$2\frac{3}{8}$...
168	$5\frac{9}{16}$	$2\frac{7}{8}$	$\frac{15}{16}$
169	$4\frac{15}{16}$	$2\frac{13}{16}$	$\frac{3}{4}$
170	$5\frac{1}{4}$	$2\frac{1}{2}$	$\frac{7}{8}$
171	$7\frac{1}{2}$	$3\frac{1}{8}$	$\frac{15}{16}$
173	$7\frac{5}{16}$	$2\frac{5}{16}$	None
174	$6\frac{5}{16}$	$2\frac{5}{16}$	None
176	$4\frac{1}{4}$	$2\frac{1}{16}$	None
177	$4\frac{7}{8}$	$2\frac{9}{16}$	$\frac{7}{8}$
178	5	$2\frac{15}{16}$	$\frac{9}{16}$
180	$4\frac{3}{16}$	$1\frac{13}{16}$	$\frac{3}{16}$
180 $\frac{1}{2}$	$4\frac{3}{16}$	$1\frac{7}{8}$	$\frac{3}{16}$
181	$4\frac{9}{16}$	2	$\frac{1}{4}$
182	$6\frac{1}{4}$	$2\frac{3}{8}$	$\frac{3}{8}$
185	$4\frac{1}{4}$	$2\frac{1}{16}$	None
186	$5\frac{1}{8}$	3	$\frac{3}{4}$
197	$5\frac{1}{4}$	$3\frac{3}{8}$	$\frac{13}{16}$
198	$7\frac{1}{4}$	$2\frac{1}{4}$	$\frac{3}{8}$
199	$5\frac{1}{4}$	$2\frac{3}{8}$	$\frac{3}{8}$
276	$6\frac{5}{8}$	$2\frac{1}{4}$	$\frac{13}{16}$
277	$8\frac{1}{16}$	$2\frac{3}{4}$	$1\frac{1}{16}$
280	$6\frac{7}{8}$	$2\frac{1}{4}$	$\frac{15}{16}$
281	$8\frac{1}{16}$	$2\frac{3}{4}$	$\frac{7}{8}$
283	$5\frac{3}{4}$	$1\frac{3}{8}$...
284	$7\frac{5}{8}$	$1\frac{7}{8}$...
285	7	$2\frac{1}{4}$...
286	$5\frac{13}{16}$	$2\frac{3}{16}$...
287	$8\frac{1}{2}$	$2\frac{9}{16}$...
290	$6\frac{3}{8}$	$1\frac{5}{8}$	$1\frac{1}{8}$
291	8	$2\frac{1}{8}$	$1\frac{1}{8}$
311	5	$1\frac{7}{8}$	$\frac{13}{16}$
312	6	$1\frac{15}{16}$	$\frac{7}{8}$
320	$5\frac{13}{16}$	$1\frac{7}{8}$	$\frac{15}{16}$
323	$6\frac{2}{16}$	$1\frac{11}{16}$	$1\frac{1}{4}$
325	$5\frac{1}{4}$	$2\frac{1}{4}$	$\frac{3}{4}$
351	$6\frac{3}{4}$	$1\frac{15}{16}$	$1\frac{7}{16}$

140 THE KEARNS-GORSUCH BOTTLE COMPANY

Mould No.	Height	Diameter	Neck Label Space
352	7 $\frac{3}{4}$	2	1 $\frac{1}{2}$
354	6 $\frac{1}{4}$	1 $\frac{5}{8}$	1 $\frac{9}{16}$
381	5 $\frac{5}{8}$	1 $\frac{7}{8}$	1 $\frac{15}{16}$
383	7	2 $\frac{1}{16}$	1 $\frac{1}{2}$
384	7 $\frac{11}{16}$	2 $\frac{1}{8}$	1 $\frac{1}{8}$
385	8 $\frac{9}{16}$	2 $\frac{7}{16}$	1 $\frac{1}{8}$
407	5 $\frac{3}{4}$	2 $\frac{5}{8}$...
434	7 $\frac{1}{8}$	3 $\frac{7}{8}$	1 $\frac{1}{2}$
452	10	6 $\frac{1}{8}$...
456	12 $\frac{15}{16}$	4 $\frac{3}{4}$	1 $\frac{3}{8}$
460	10 $\frac{3}{4}$	4 $\frac{3}{4}$	1 $\frac{3}{8}$
504	4 $\frac{1}{8}$	3 $\frac{1}{2}$...
605	4 $\frac{3}{16}$	2 $\frac{9}{16}$	5 $\frac{5}{8}$
606	4 $\frac{3}{4}$	2 $\frac{9}{16}$	None
607	2 $\frac{7}{8}$	2 $\frac{1}{16}$	1 $\frac{1}{2}$
610	5	3	1 $\frac{11}{16}$
611	7 $\frac{7}{16}$	2 $\frac{3}{8}$	1 $\frac{1}{16}$
612	4 $\frac{15}{16}$	2 $\frac{1}{2}$	None
613	4 $\frac{9}{16}$	2 $\frac{1}{16}$	None
614	4 $\frac{5}{8}$	1 $\frac{15}{16}$	1 $\frac{1}{8}$
616	3 $\frac{11}{16}$	2 $\frac{11}{16}$	5 $\frac{5}{16}$
617	4 $\frac{1}{4}$	2 $\frac{7}{8}$	1 $\frac{13}{16}$
618	7 $\frac{1}{16}$	2 $\frac{1}{4}$	None
619	5 $\frac{15}{16}$	2 $\frac{5}{8}$	None
620	4 $\frac{1}{4}$	2 $\frac{1}{16}$	None
622	4 $\frac{13}{16}$	2 $\frac{3}{8}$	5 $\frac{5}{8}$
623	4 $\frac{3}{8}$	1 $\frac{13}{16}$	None
624	4 $\frac{1}{4}$	2	None
625	5 $\frac{7}{16}$	2 $\frac{1}{8}$	None
626	7 $\frac{1}{16}$	2 $\frac{9}{16}$	None
629	2 $\frac{1}{2}$	1 $\frac{15}{16}$	None
630	3 $\frac{3}{8}$	2 $\frac{1}{4}$	None
631	4 $\frac{1}{2}$	2 $\frac{9}{16}$	None
632	5 $\frac{3}{8}$	3 $\frac{3}{16}$	None
633	6 $\frac{3}{8}$	4 $\frac{1}{8}$	None
634	4 $\frac{5}{8}$	2 $\frac{1}{4}$	3 $\frac{1}{4}$
635	6 $\frac{9}{16}$	1 $\frac{1}{2}$	1 $\frac{15}{16}$
636	4 $\frac{3}{4}$	2 $\frac{7}{8}$	None
637	3 $\frac{3}{4}$	1 $\frac{3}{4}$	None
638	4 $\frac{1}{2}$	2 $\frac{3}{16}$	None
640	4 $\frac{1}{4}$	2 $\frac{11}{16}$...
641	4 $\frac{1}{4}$	2 $\frac{11}{16}$...
642	5 $\frac{1}{16}$	2 $\frac{1}{16}$	7 $\frac{7}{16}$
648	5 $\frac{5}{8}$	2 $\frac{3}{4}$	1 $\frac{15}{16}$
650	4 $\frac{1}{4}$	2 $\frac{1}{2}$	1 $\frac{1}{2}$
651	4 $\frac{3}{4}$	2 $\frac{3}{8}$...
652	4 $\frac{9}{16}$	2 $\frac{9}{16}$	None
654	5 $\frac{1}{16}$	4 $\frac{9}{16}$	1 $\frac{11}{16}$
658	5 $\frac{1}{8}$	2 $\frac{9}{16}$	1 $\frac{1}{2}$
659	6 $\frac{1}{16}$	3 $\frac{9}{16}$	1 $\frac{11}{16}$
660	7 $\frac{1}{8}$	4 $\frac{1}{8}$	1 $\frac{1}{2}$
661	4 $\frac{7}{16}$	4	...
662	2 $\frac{15}{16}$	2 $\frac{1}{8}$...

**APPROXIMATE
SHIPPING WEIGHTS
of
BOTTLES and JARS
in
CRATES
and
RESHIPPING CASES**

APPROXIMATE SHIPPING WEIGHTS PER GROSS

Machine Made Pickle Ware

	Crated and Paper Reshipping Cases	Wood Reshipping Cases
4 oz.	65 lbs.	80 lbs.
6 oz.	90 lbs.	115 lbs.
7 oz.	110 lbs.	135 lbs.
8 oz.	120 lbs.	150 lbs.
9 oz.	130 lbs.	155 lbs.
10 oz.	132 lbs.	155 lbs.
12 oz.	150 lbs.	175 lbs.
14 oz.	155 lbs.	180 lbs.
16 oz.	165 lbs.	190 lbs.
18 oz.	185 lbs.	215 lbs.
24 oz.	230 lbs.	265 lbs.
32 oz.	260 lbs.	310 lbs.

Lightning Style Preserve and Fruit Jars

	Crated and Paper Reshipping Cases	Wood Reshipping Cases
6 oz.	90 lbs.	115 lbs.
8 oz.	110 lbs.	135 lbs.
10 oz.	115 lbs.	145 lbs.
12 oz.	130 lbs.	160 lbs.
16 oz.	175 lbs.	200 lbs.
19 oz.	220 lbs.	270 lbs.
23 oz.	220 lbs.	270 lbs.
Quarts	240 lbs.	300 lbs.
½ Gal. Short	345 lbs.	470 lbs.
½ Gal. Tall	370 lbs.	500 lbs.
Gallon	650 lbs.	900 lbs.
2 Gallon	1100 lbs.	

Jams, Mustards, Preserves and Candy Jars

	Crated and Paper Reshipping Cases	Wood Reshipping Cases
4 oz.	45 lbs.	65 lbs.
5 oz.	55 lbs.	75 lbs.
6 oz.	65 lbs.	90 lbs.
7 oz.	85 lbs.	100 lbs.
8 oz.	90 lbs.	105 lbs.
9 oz.	90 lbs.	110 lbs.
10 oz.	105 lbs.	130 lbs.
11 oz.	110 lbs.	135 lbs.
12 oz.	110 lbs.	135 lbs.
14 oz.	135 lbs.	160 lbs.
16 oz.	150 lbs.	180 lbs.
18 oz.	160 lbs.	200 lbs.
20 oz.	175 lbs.	225 lbs.
24 oz.	215 lbs.	265 lbs.
32 oz.	250 lbs.	300 lbs.

Peppers and Salts

	Crated and Paper Reshipping Cases	Wood Reshipping Cases
2 oz. and Under	32 lbs.	50 lbs.
3 oz.	45 lbs.	65 lbs.
4 oz.	45 lbs.	65 lbs.
5 oz.	80 lbs.	100 lbs.
6 oz.	80 lbs.	100 lbs.
7 oz.	80 lbs.	100 lbs.

Olives

	Crated and Paper Reshipping Cases	Wood Reshipping Cases
3 oz.	60 lbs.	75 lbs.
4 oz.	65 lbs.	80 lbs.
5 oz.	70 lbs.	85 lbs.
6 oz.	90 lbs.	110 lbs.
7 oz.	95 lbs.	115 lbs.
8 oz.	110 lbs.	135 lbs.
9 oz.	150 lbs.	180 lbs.
10 oz.	150 lbs.	180 lbs.
11 oz.	160 lbs.	190 lbs.
12 oz.	170 lbs.	205 lbs.
14 oz.	185 lbs.	215 lbs.
16 oz.	195 lbs.	225 lbs.
18 oz.	200 lbs.	235 lbs.
20 oz.	210 lbs.	250 lbs.
22 oz.	220 lbs.	270 lbs.
28 oz.	240 lbs.	295 lbs.

Machine Made Packers, or Glass Jugs

	Bulk	Crated
5 to Gallon	160 lbs.	220 lbs.
Quart	190 lbs.	240 lbs.
½ Gallon	300 lbs.	400 lbs.
Gallon	500 lbs.	650 lbs.
2 Gallon	800 lbs.	1100 lbs.

Gallons packed in ½ doz. Crates 875 lbs.

Catsups, Grape Juice, Vinegar, Syrups and Pepper Sauce

	Crated and Paper Reshipping Cases	Wood Reshipping Cases
4 oz.	55 lbs.	70 lbs.
5 oz.	55 lbs.	70 lbs.
6 oz.	67 lbs.	90 lbs.
7 oz.	75 lbs.	100 lbs.
8 oz.	90 lbs.	110 lbs.
10 oz.	105 lbs.	125 lbs.
11 oz.	110 lbs.	135 lbs.
12 oz.	110 lbs.	135 lbs.
14 oz.	140 lbs.	165 lbs.
16 oz.	160 lbs.	190 lbs.
26 oz.	230 lbs.	275 lbs.
32 oz.	250 lbs.	300 lbs.

Panels and Extracts

	Boxed
¾ oz.	30 lbs.
1 oz.	35 lbs.
1¼ oz.	40 lbs.
1½ oz.	45 lbs.
2 oz.	55 lbs.
2½ oz.	60 lbs.
3 oz.	65 lbs.
4 oz.	85 lbs.
6 oz.	105 lbs.
8 oz.	130 lbs.
12 oz.	175 lbs.
16 oz.	230 lbs.

